

# Phospho-Estrogen Receptor alpha (Ser118) polyclonal antibody

Catalog: BZ16290

Host: Rabbit

Reactivity: Human

## BackGround:

ER (estrogen receptor 1) a member of the steroid receptor superfamily, contains highly conserved DNA binding (DBD) and ligand binding domains (LBD). Through its estrogen-independent and estrogen-dependent activation domains (AF-1 and AF-2, respectively), ER regulates transcription by recruiting coactivator proteins and interacting with general transcriptional machinery. Phosphorylation provides an important mechanism to regulate ER activity. ER is phosphorylated on multiple sites.

## Product:

Liquid in PBS containing 50% glycerol, 0.5% BSA and 0.02% sodium azide, pH 7.3.

## Molecular Weight:

Calculated MW: 66 kDa; Observed MW: 66 kDa

## Swiss-Prot:

P03372

## Purification&Purity:

Affinity Purified

## Applications:

WB: 1/500-1/1000 IHC: 1/50-1/100 ICC: 1/100-1/200

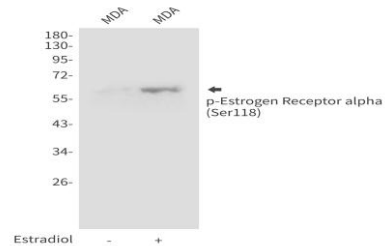
## Storage&Stability:

Store at 4 °C short term. Aliquot and store at -20 °C long term. Avoid freeze-thaw cycles.

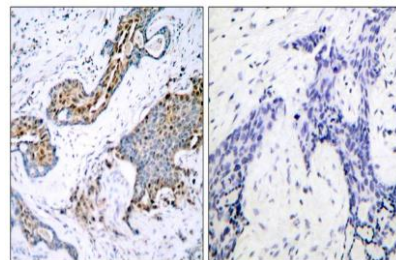
## Isotype:

IgG

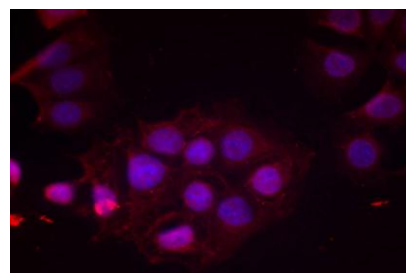
## DATA:



Western blot analysis of Phospho-Estrogen Receptor alpha in MDAMB435 lysates using Phospho-Estrogen Receptor alpha antibody.



Immunohistochemistry analysis of paraffin-embedded Human breast carcinoma tissue using Estrogen Receptor alpha antibody. High-pressure and temperature Sodium Citrate pH 6.0 was used for antigen retrieval. Sample with blocking peptide on the right.



Immunofluorescence analysis of Phospho-Estrogen Receptor alpha in MCF-7 cells using Estrogen Receptor alpha antibody.

## Note:

For research use only, not for use in diagnostic procedure.

## Bioworld Technology, Inc.

Add: 1660 South Highway 100, Suite 500 St. Louis Park, MN 55416, USA.

Email: [info@bioworld.com](mailto:info@bioworld.com)

Tel: 6123263284

Fax: 6122933841

## Bioworld technology, co. Ltd.

Add: No 9, weidi road Qixia District Nanjing, 210046, P. R. China.

Email: [info@biogot.com](mailto:info@biogot.com)

Tel: 0086-025-68037686

Fax: 0086-025-68035151