

## Phospho-VEGF Receptor 2 (Tyr1175) polyclonal antibody

Catalog: BZ16292

Host: Rabbit

Reactivity: Human, Mouse, Rat

### BackGround:

VEGFR-2 is a receptor tyrosine kinase of the VEGFR family. High affinity receptor for VEGF and VEGF-C. Ligand binding induces autophosphorylation and activation. Activated receptor recruits proteins including Shc, GRB2, PI3K, Nck, SHP-1 and SHP-2.

### Product:

Liquid in PBS containing 50% glycerol, 0.5% BSA and 0.02% sodium azide, pH 7.3.

### Molecular Weight:

-

### Swiss-Prot:

P35968

### Purification&Purity:

Affinity Purified

### Applications:

IHC: 1/50-1/100 ICC: 1/100-1/200

### Storage&Stability:

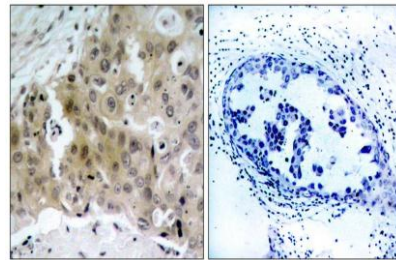
Store at 4 °C short term. Aliquot and store at -20 °C long term. Avoid freeze-thaw cycles.

### Isotype:

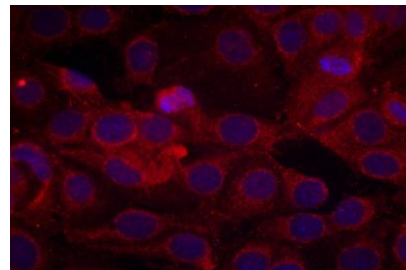
IgG

### DATA:

Immunohistochemistry analysis of paraffin-embedded Human breast carcinoma tissue using Phospho-VEGF Receptor 2 antibody. High-pressure and temperature Sodium Citrate pH 6.0 was used for antigen retrieval. Sample with blocking peptide on the right.



Immunofluorescence analysis of Phospho-VEGF Receptor 2 in MCF-7 cells using Phospho-VEGF Receptor 2 antibody, and DAPI.



### Note:

For research use only, not for use in diagnostic procedure.

### Bioworld Technology, Inc.

Add: 1660 South Highway 100, Suite 500 St. Louis Park, MN 55416, USA.

Email: [info@bioworld.com](mailto:info@bioworld.com)

Tel: 6123263284

Fax: 6122933841

### Bioworld technology, co. Ltd.

Add: No 9, weidi road Qixia District Nanjing, 210046, P. R. China.

Email: [info@biogot.com](mailto:info@biogot.com)

Tel: 0086-025-68037686

Fax: 0086-025-68035151