

Phospho-ATF4 (Ser219) polyclonal antibody

Catalog: BZ16313

Host: Rabbit

Reactivity: Human

BackGround:

ATF4, an activating transcription factor/cAMP-response element-binding protein family member, functions in the PERK and eIF2 α ER stress responsive pathway. ER stress represses the translation of the majority of mRNAs, but selectively stimulates the translation of certain mRNAs including that of ATF-4. Induced expression of ATF-4 increases the expression of genes critical for the recovery from ER stress.

Product:

Liquid in PBS containing 50% glycerol, 0.5% BSA and 0.02% sodium azide, pH 7.3.

Molecular Weight:

Calculated MW: 39 kDa; Observed MW: 39 kDa

Swiss-Prot:

P18848

Purification&Purity:

Affinity Purified

Applications:

WB: 1/500-1/1000

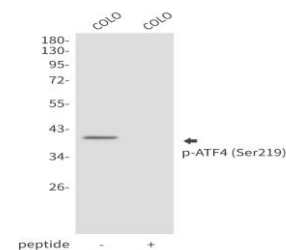
Storage&Stability:

Store at 4 °C short term. Aliquot and store at -20 °C long term. Avoid freeze-thaw cycles.

Isotype:

IgG

DATA:



Western blot analysis of Phospho-ATF4 in COLO lysates using Phospho-ATF4 antibody.

Note:

For research use only, not for use in diagnostic procedure.

Bioworld Technology, Inc.

Add: 1660 South Highway 100, Suite 500 St. Louis Park, MN 55416, USA.

Email: info@bioworld.com

Tel: 6123263284

Fax: 6122933841

Bioworld technology, co. Ltd.

Add: No 9, weidi road Qixia District Nanjing, 210046, P. R. China.

Email: info@biogot.com

Tel: 0086-025-68037686

Fax: 0086-025-68035151