

Phospho-TGF beta Receptor I (Ser165) polyclonal antibody

Catalog: BZ16332

Host: Rabbit

Reactivity: Human, Mouse, Rat

BackGround:

The protein encoded by this gene forms a heteromeric complex with type II TGF-beta receptors when bound to TGF-beta, transducing the TGF-beta signal from the cell surface to the cytoplasm. The encoded protein is a serine/threonine protein kinase.

Product:

Liquid in PBS containing 50% glycerol, 0.5% BSA and 0.02% sodium azide, pH 7.3.

Molecular Weight:

Calculated MW: 56 kDa; Observed MW: 56 kDa

Swiss-Prot:

P36897

Purification&Purity:

Affinity Purified

Applications:

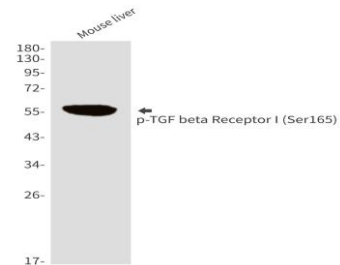
WB: 1/500-1/1000 IHC: 1/50-1/100 ICC: 1/100-1/200
ELISA: 1/10000

Storage&Stability:

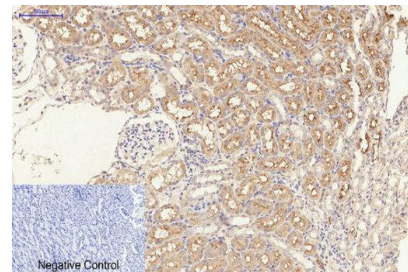
Store at 4 °C short term. Aliquot and store at -20 °C long term. Avoid freeze-thaw cycles.

Isotype:

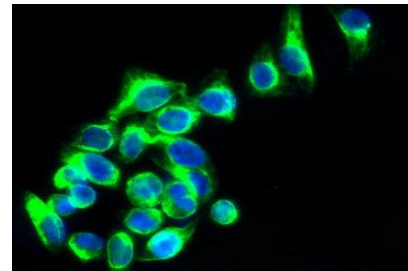
IgG

DATA:

Western blot analysis of Phospho-TGF beta Receptor I in mouse liver lysates using Phospho-TGF beta Receptor I antibody.



Immunohistochemistry analysis of paraffin-embedded rat kidney tissue using Phospho-TGF beta Receptor I antibody. High-pressure and temperature Sodium Citrate pH 6.0 was used for antigen retrieval.



Immunofluorescence analysis of Phospho-TGF beta Receptor I in HepG2 cells using Phospho-TGF beta Receptor I antibody.

Note:

For research use only, not for use in diagnostic procedure.

Bioworld Technology, Inc.

Add: 1660 South Highway 100, Suite 500 St. Louis Park, MN 55416, USA.

Email: info@bioworld.com

Tel: 6123263284

Fax: 6122933841

Bioworld technology, co. Ltd.

Add: No 9, weidi road Qixia District Nanjing, 210046, P. R. China.

Email: info@biogot.com

Tel: 0086-025-68037686

Fax: 0086-025-68035151