

**Phospho-EDG1 (Thr236) polyclonal antibody**

Catalog: BZ16333

Host: Rabbit

Reactivity: Human, Mouse, Rat

**BackGround:**

Receptor for the lysosphingolipid sphingosine 1-phosphate (S1P). S1P is a bioactive lysophospholipid that elicits diverse physiological effect on most types of cells and tissues. This inducible epithelial cell G-protein-coupled receptor may be involved in the processes that regulate the differentiation of endothelial cells.

**Product:**

Liquid in PBS containing 50% glycerol, 0.5% BSA and 0.02% sodium azide, pH 7.3.

**Molecular Weight:**

Calculated MW: 43 kDa; Observed MW: 42 kDa

**Swiss-Prot:**

P21453

**Purification&Purity:**

Affinity Purified

**Applications:**

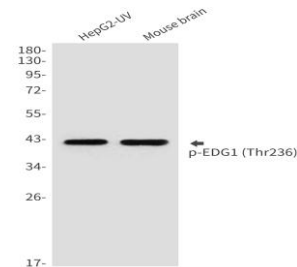
WB: 1/500-1/1000 ICC: 1/100-1/200 ELISA: 1/10000

**Storage&Stability:**

Store at 4 °C short term. Aliquot and store at -20 °C long term. Avoid freeze-thaw cycles.

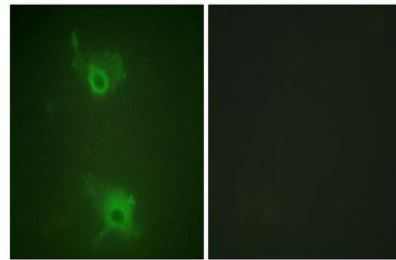
**Isotype:**

IgG

**DATA:**

Western blot analysis of Phospho-EDG1 in HepG2, mouse brain lysates using Phospho-EDG1 antibody.

Immunofluorescence analysis of Phospho-EDG1 in COS7 using Phospho-EDG1 antibody. The picture on the right is blocked using the Phospho-peptide.

**Note:**

For research use only, not for use in diagnostic procedure.

**Bioworld Technology, Inc.**

Add: 1660 South Highway 100, Suite 500 St. Louis Park, MN 55416, USA.

Email: [info@bioworld.com](mailto:info@bioworld.com)

Tel: 6123263284

Fax: 6122933841

**Bioworld technology, co. Ltd.**

Add: No 9, weidi road Qixia District Nanjing, 210046, P. R. China.

Email: [info@biogot.com](mailto:info@biogot.com)

Tel: 0086-025-68037686

Fax: 0086-025-68035151