

Cyclin B1 polyclonal antibody

Catalog: BZ16351

Host: Rabbit

Reactivity: Human, Mouse, Rat

BackGround:

Essential for the control of the cell cycle at the G2/M (mitosis) transition. a member of the highly conserved cyclin family, whose members are characterized by a dramatic periodicity in protein abundance through the cell cycle. Cyclins function as regulators of CDK kinases.

Product:

Liquid in PBS containing 50% glycerol, 0.5% BSA and 0.02% sodium azide, pH 7.3.

Molecular Weight:

Calculated MW: 48 kDa; Observed MW: 60 kDa

Swiss-Prot:

P14635

Purification&Purity:

Affinity Purified

Applications:

WB: 1/500-1/1000 IHC: 1/50-1/100 IF: 1/50-1/200
ELISA: 1/10000

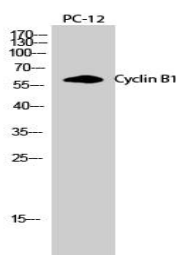
Storage&Stability:

Store at 4 °C short term. Aliquot and store at -20 °C long term. Avoid freeze-thaw cycles.

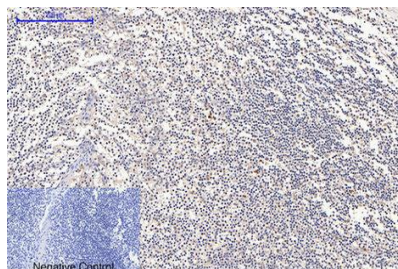
Isotype:

IgG

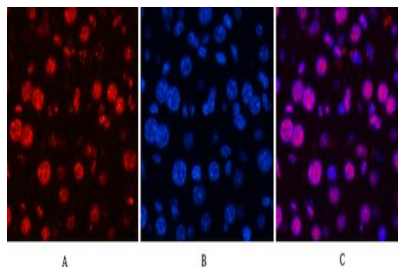
DATA:



Western blot analysis of Cyclin B1 in PC-12 lysates using Cyclin B1 antibody.



Immunofluorescence analysis of Cyclin B1 in mouse liver using Cyclin B1 antibody, and DAPI.



Immunofluorescence analysis of Cyclin B1 in rat liver using Cyclin B1 antibody.

Immunohistochemistry analysis of paraffin-embedded Human tonsil using Cyclin B1 antibody. High-pressure and temperature Sodium Citrate pH 6.0 was used for antigen retrieval. Negative control was used by secondary antibody only.

Note:

For research use only, not for use in diagnostic procedure.

Bioworld Technology, Inc.

Add: 1660 South Highway 100, Suite 500 St. Louis Park, MN 55416, USA.

Email: info@bioworld.com

Tel: 6123263284

Fax: 6122933841

Bioworld technology, co. Ltd.

Add: No 9, weidi road Qixia District Nanjing, 210046, P. R. China.

Email: info@biogot.com

Tel: 0086-025-68037686

Fax: 0086-025-68035151