

## Mitofusin 2 polyclonal antibody

Catalog: BZ16365

Host: Rabbit

Reactivity: Human, Mouse, Rat

### BackGround:

Plays an important role in the regulation of vascular smooth muscle cell proliferation. Involved in the clearance of damaged mitochondria via selective autophagy (mitophagy). Is required for PARK2 recruitment to dysfunctional mitochondria.

### Product:

Liquid in PBS containing 50% glycerol, 0.5% BSA and 0.02% sodium azide, pH 7.3.

### Molecular Weight:

Calculated MW: 86 kDa; Observed MW: 86 kDa

### Swiss-Prot:

O95140

### Purification&Purity:

Affinity Purified

### Applications:

WB: 1/500-1/1000 IHC: 1/50-1/100 ELISA: 1/10000

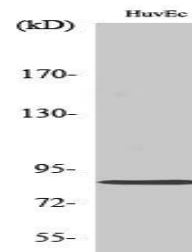
### Storage&Stability:

Store at 4 °C short term. Aliquot and store at -20 °C long term. Avoid freeze-thaw cycles.

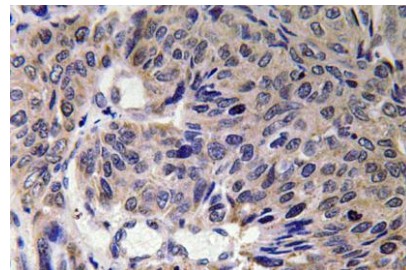
### Isotype:

IgG

### DATA:



Western blot analysis of Mitofusin 2 in various lysates using Mitofusin 2 antibody.



Immunohistochemistry analysis of paraffin-embedded Human lung carcinoma tissue using Mitofusin 2 antibody. High-pressure and temperature Sodium Citrate pH 6.0 was used for antigen retrieval.

Western blot analysis of Mitofusin 2 in HUVEC lysates using Mfn2 antibody.

### Note:

For research use only, not for use in diagnostic procedure.

### Bioworld Technology, Inc.

Add: 1660 South Highway 100, Suite 500 St. Louis Park, MN 55416, USA.

Email: [info@bioworld.com](mailto:info@bioworld.com)

Tel: 6123263284

Fax: 6122933841

### Bioworld technology, co. Ltd.

Add: No 9, weidi road Qixia District Nanjing, 210046, P. R. China.

Email: [info@biogot.com](mailto:info@biogot.com)

Tel: 0086-025-68037686

Fax: 0086-025-68035151