

TAK1 polyclonal antibody

Catalog: BZ16400

Host: Rabbit

Reactivity: Human, Mouse, Rat

BackGround:

Component of a protein kinase signal transduction cascade. Mediator of TRAF6 and TGF-beta signal transduction. Activates IKBKB and MAPK8 in response to TRAF6 signaling. Stimulates NF-kappa-B activation and the p38 MAPK pathway. In osmotic stress signaling, plays a major role in the activation of MAPK8/JNK, but not that of NF-kappa-B.

Product:

Liquid in PBS containing 50% glycerol, 0.5% BSA and 0.02% sodium azide, pH 7.3.

Molecular Weight:

Calculated MW: 67 kDa; Observed MW: 70 kDa

Swiss-Prot:

O43318

Purification&Purity:

Affinity Purified

Applications:

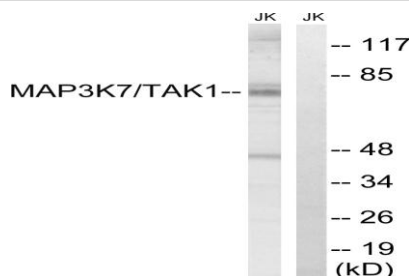
WB: 1/500-1/1000 IHC: 1/50-1/100 IF: 1/50-1/200
ELISA: 1/10000

Storage&Stability:

Store at 4 °C short term. Aliquot and store at -20 °C long term. Avoid freeze-thaw cycles.

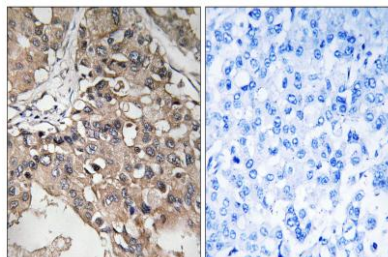
Isotype:

IgG

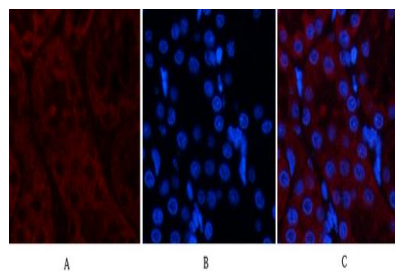
DATA:

Western blot analysis of TAK1 in Jurkat lysates, treated with heat shock lysates using TAK1 antibody. The lane on the right is blocked with the

synthesized peptide.



Immunohistochemistry analysis of paraffin-embedded Human breast carcinoma using TAK1 antibody. High-pressure and temperature Sodium Citrate pH 6.0 was used for antigen retrieval. Sample with blocking peptide on the right.



Immunofluorescence analysis of TAK1 in rat kidney using Tak1 antibody, and DAPI.

Immunofluorescence analysis of TAK1 in mouse kidney using Tak1 antibody, and DAPI.

Note:

For research use only, not for use in diagnostic procedure.

Bioworld Technology, Inc.

Add: 1660 South Highway 100, Suite 500 St. Louis Park, MN 55416, USA.

Email: info@bioworld.com

Tel: 6123263284

Fax: 6122933841

Bioworld technology, co. Ltd.

Add: No 9, weidi road Qixia District Nanjing, 210046, P. R. China.

Email: info@biogot.com

Tel: 0086-025-68037686

Fax: 0086-025-68035151