

Cleaved-Caspase 6 p18 polyclonal antibody

Catalog: BZ16406

Host: Rabbit

Reactivity: Human, Rat

BackGround:

Caspase-6 (Mch2) is one of the major executioner caspases functioning in cellular apoptotic processes. Upon apoptotic stimulation, initiator caspases such as caspase-9 are cleaved and activated. The activated upstream caspases further process downstream executioner caspases, such as caspase-3 and caspase-6, by cleaving them into large and small subunits, thereby initiating a caspase cascade leading to apoptosis. One of the major targets for caspase-6 is the membrane associated protein lamin A.

Product:

Liquid in PBS containing 50% glycerol, 0.5% BSA and 0.02% sodium azide, pH 7.3.

Molecular Weight:

Calculated MW: 33 kDa; Observed MW: 20,35 kDa

Swiss-Prot:

P55212

Purification&Purity:

Affinity Purified

Applications:

WB: 1/500-1/1000 IHC: 1/50-1/100 ELISA: 1/10000

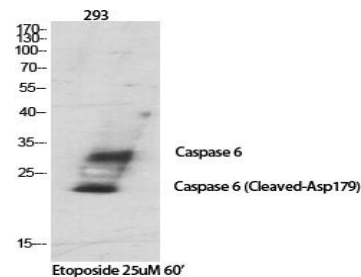
Storage&Stability:

Store at 4 °C short term. Aliquot and store at -20 °C long term. Avoid freeze-thaw cycles.

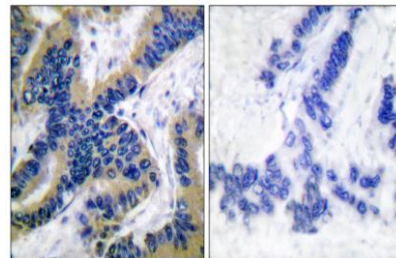
Isotype:

IgG

DATA:



Western blot analysis of Cleaved-Caspase 6 p18 in various lysates using Cleaved-Caspase 6 p18 antibody.



Western blot analysis of Cleaved-Caspase 6 p18 in 293 lysates using Cleaved-Caspase6 p18 antibody.

Immunohistochemistry analysis of paraffin-embedded Human lung carcinoma tissue using Caspase 6 antibody. High-pressure and temperature Sodium Citrate pH 6.0 was used for antigen retrieval. Sample with blocking peptide on the right.

Western blot analysis of Cleaved-Caspase 6 p18 in 293 lysates treated with Etoposide using Cleaved-Caspase 6 p18 antibody. The lane on the right is blocked with the synthesized peptide.

Note:

For research use only, not for use in diagnostic procedure.

Bioworld Technology, Inc.

Add: 1660 South Highway 100, Suite 500 St. Louis Park, MN 55416, USA.

Email: info@bioworld.com

Tel: 6123263284

Fax: 6122933841

Bioworld technology, co. Ltd.

Add: No 9, weidi road Qixia District Nanjing, 210046, P. R. China.

Email: info@biogot.com

Tel: 0086-025-68037686

Fax: 0086-025-68035151