

Phospho-alpha 1 Sodium Potassium ATPase (Ser23) polyclonal antibody

Catalog: BZ16415

Host: Rabbit

Reactivity: Rat

BackGround:

The ATPase Na⁺/K⁺ transporting subunit alpha 1 encoded by ATP1A1 belongs to the family of P-type cation transport ATPases, and to the subfamily of Na⁺/K⁺-ATPases. Na⁺/K⁺-ATPase is an integral membrane protein responsible for establishing and maintaining the electrochemical gradients of Na and K ions across the plasma membrane.

Product:

Liquid in PBS containing 50% glycerol, 0.5% BSA and 0.02% sodium azide, pH 7.3.

Molecular Weight:

Calculated MW: 113 kDa; Observed MW: 113 kDa

Swiss-Prot:

P06685

Purification&Purity:

Affinity Purified

Applications:

WB: 1/500-1/1000 IF: 1/50-1/200 ELISA: 1/10000

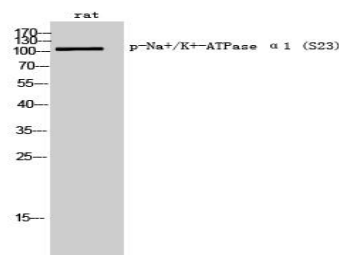
Storage&Stability:

Store at 4 °C short term. Aliquot and store at -20 °C long term. Avoid freeze-thaw cycles.

Isotype:

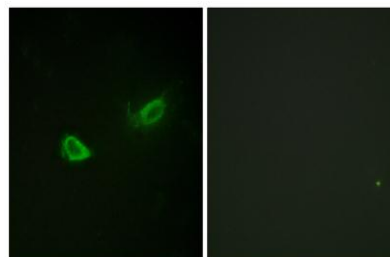
IgG

DATA:



Western blot analysis of Phospho-alpha 1 Sodium Potassium ATPase in rat lysates using Phospho-alpha 1 Sodium Potassium ATPase antibody.

Immunofluorescence analysis of Phospho-alpha 1 Sodium Potassium ATPase in NIH/3T3 using ATP1 alpha1/Na⁺/K⁺ ATPase1 antibody. The picture on the right is blocked using the Phospho- peptide.



Western blot analysis of Phospho-alpha 1 Sodium Potassium ATPase in rat brain lysates using ATP1 alpha1/Na⁺/K⁺ ATPase1 antibody. The lane on the right is blocked with the Phospho- peptide.

Note:

For research use only, not for use in diagnostic procedure.

Bioworld Technology, Inc.

Add: 1660 South Highway 100, Suite 500 St. Louis Park, MN 55416, USA.

Email: info@bioworld.com

Tel: 6123263284

Fax: 6122933841

Bioworld technology, co. Ltd.

Add: No 9, weidi road Qixia District Nanjing, 210046, P. R. China.

Email: info@biogot.com

Tel: 0086-025-68037686

Fax: 0086-025-68035151