

GPR75 polyclonal antibody

Catalog: BZ16418

Host: Rabbit

Reactivity: Human, Mouse

BackGround:

G protein-coupled receptor that is activated by the chemokine CCL5/RANTES.

Product:

Liquid in PBS containing 50% glycerol, 0.5% BSA and 0.02% sodium azide, pH 7.3.

Molecular Weight:

Calculated MW: 59 kDa; Observed MW: 59 kDa

Swiss-Prot:

O95800

Purification&Purity:

Affinity Purified

Applications:

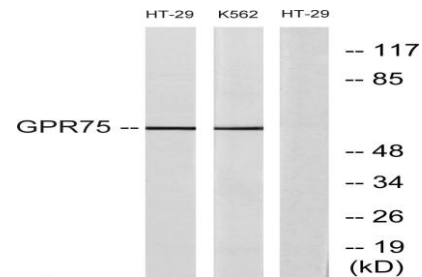
WB: 1/500-1/1000 IF: 1/50-1/200 ELISA: 1/10000

Storage&Stability:

Store at 4 °C short term. Aliquot and store at -20 °C long term. Avoid freeze-thaw cycles.

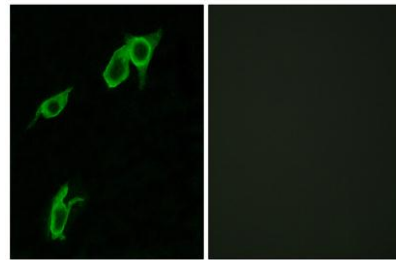
Isotype:

IgG

DATA:

Western blot analysis of GPR75 in HT-29 and K562 lysates using GPR75 antibody. The lane on the right is blocked with the synthesized peptide.

Immunofluorescence analysis of GPR75 in LOVO using GPR75 antibody. The picture on the right is blocked using the synthesized peptide.

**Note:**

For research use only, not for use in diagnostic procedure.

Bioworld Technology, Inc.

Add: 1660 South Highway 100, Suite 500 St. Louis Park, MN 55416, USA.

Email: info@bioworld.com

Tel: 6123263284

Fax: 6122933841

Bioworld technology, co. Ltd.

Add: No 9, weidi road Qixia District Nanjing, 210046, P. R. China.

Email: info@biogot.com

Tel: 0086-025-68037686

Fax: 0086-025-68035151