

**CaMKII alpha/delta polyclonal antibody**

Catalog: BZ16426

Host: Rabbit

Reactivity: Human, Mouse, Rat

**Background:**

The product of CAMK2A (calcium/calmodulin dependent protein kinase II alpha) belongs to the serine/threonine protein kinases family, and to the Ca(2+)/calmodulin-dependent protein kinases subfamily. Calcium signaling is crucial for several aspects of plasticity at glutamatergic synapses. This calcium calmodulin-dependent protein kinase is composed of four different chains: alpha, beta, gamma, and delta. The alpha chain encoded by this gene is required for hippocampal long-term potentiation (LTP) and spatial learning. In addition to its calcium-calmodulin (CaM)-dependent activity, this protein can undergo autophosphorylation, resulting in CaM-independent activity. Two transcript variants encoding distinct isoforms have been identified for CAMK2A.

**Product:**

Liquid in PBS containing 50% glycerol, 0.5% BSA and 0.02% sodium azide, pH 7.3.

**Molecular Weight:**

Calculated MW: 54 kDa; Observed MW: 54 kDa

**Swiss-Prot:**

Q9UQM7/Q13557

**Purification&Purity:**

Affinity Purified

**Applications:**

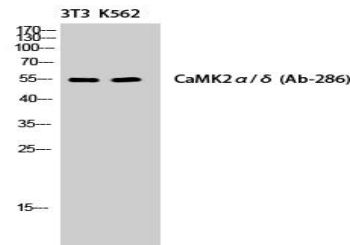
WB: 1/500-1/1000 IHC: 1/50-1/100 IF: 1/50-1/200  
ELISA: 1/10000

**Storage&Stability:**

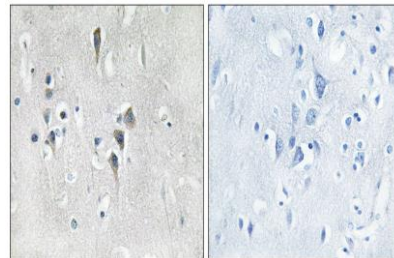
Store at 4 °C short term. Aliquot and store at -20 °C long term. Avoid freeze-thaw cycles.

**Isotype:**

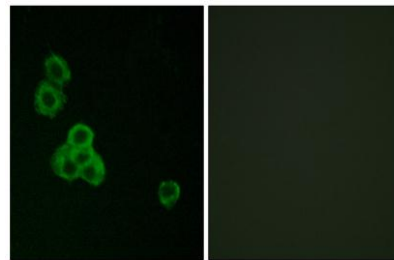
IgG

**DATA:**

Western blot analysis of CaMKII alpha/delta in NIH3T3/K562 lysates using CaMKII alpha/delta antibody.



Immunofluorescence analysis of CaMKII alpha/delta in MCF-7 using CaMK2 alpha/delta antibody. The picture on the right is blocked using the synthesized peptide.



Immunohistochemistry analysis of paraffin-embedded Human brain tissue using CaMK2 alpha/delta antibody. High-pressure and temperature Sodium Citrate pH 6.0 was used for antigen retrieval. Sample with blocking peptide on the right.

Western blot analysis of CaMKII alpha/delta in NIH/3T3 and K562 lysates using CaMKII alpha/delta antibody. The lane on the right is blocked with the synthesized peptide.

**Note:**

For research use only, not for use in diagnostic procedure.

**Bioworld Technology, Inc.**

Add: 1660 South Highway 100, Suite 500 St. Louis Park, MN 55416, USA.

Email: [info@bioworld.com](mailto:info@bioworld.com)

Tel: 6123263284

Fax: 6122933841

**Bioworld technology, co. Ltd.**

Add: No 9, weidi road Qixia District Nanjing, 210046, P. R. China.

Email: [info@biogol.com](mailto:info@biogol.com)

Tel: 0086-025-68037686

Fax: 0086-025-68035151