

**GPR158 polyclonal antibody**

Catalog: BZ16438

Host: Rabbit

Reactivity: Human, Mouse

**BackGround:**

Orphan receptor.

**Product:**

Liquid in PBS containing 50% glycerol, 0.5% BSA and 0.02% sodium azide, pH 7.3.

**Molecular Weight:**

Calculated MW: 135 kDa; Observed MW: 150 kDa

**Swiss-Prot:**

Q5T848

**Purification&Purity:**

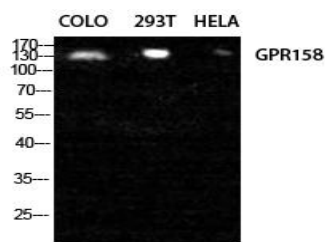
Affinity Purified

**Applications:**WB: 1/500-1/1000 IHC: 1/50-1/100 IF: 1/50-1/200  
ELISA: 1/10000**Storage&Stability:**

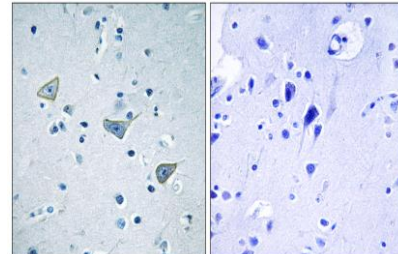
Store at 4 °C short term. Aliquot and store at -20 °C long term. Avoid freeze-thaw cycles.

**Isotype:**

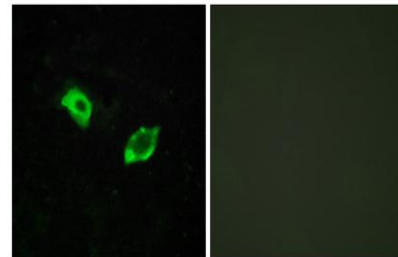
IgG

**DATA:**

Western blot analysis of GPR158 in COLO, 293T, HELA lysates using GPR158 antibody.



Immunofluorescence analysis of GPR158 in HUVEC using GPR158 antibody. The picture on the right is blocked using the synthesized peptide.



Immunohistochemistry analysis of paraffin-embedded Human brain tissue using GPR158 antibody. High-pressure and temperature Sodium Citrate pH 6.0 was used for antigen retrieval. Sample with blocking peptide on the right.

Western blot analysis of GPR158 in K562 lysates using GPR158 antibody. The lane on the right is blocked with the synthesized peptide.

**Note:**

For research use only, not for use in diagnostic procedure.

**Bioworld Technology, Inc.**

Add: 1660 South Highway 100, Suite 500 St. Louis Park, MN 55416, USA.

Email: [info@bioworld.com](mailto:info@bioworld.com)

Tel: 6123263284

Fax: 6122933841

**Bioworld technology, co. Ltd.**

Add: No 9, weidi road Qixia District Nanjing, 210046, P. R. China.

Email: [info@biogot.com](mailto:info@biogot.com)

Tel: 0086-025-68037686

Fax: 0086-025-68035151