

RhoA polyclonal antibody

Catalog: BZ16454

Host: Rabbit

Reactivity: Human, Mouse, Rat

BackGround:

Rho A is a small G protein of the Rho family. Regulates a signal transduction pathway linking plasma membrane receptors to the assembly of focal adhesions and actin stress fibers.

Product:

Liquid in PBS containing 50% glycerol, 0.5% BSA and 0.02% sodium azide, pH 7.3.

Molecular Weight:

Calculated MW: 22 kDa; Observed MW: 22 kDa

Swiss-Prot:

P61586

Purification&Purity:

Affinity Purified

Applications:

WB: 1/500-1/1000 IHC: 1/50-1/100 IF: 1/50-1/200
ELISA: 1/10000

Storage&Stability:

Store at 4 °C short term. Aliquot and store at -20 °C long term. Avoid freeze-thaw cycles.

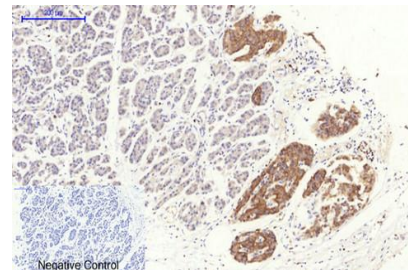
Isotype:

IgG

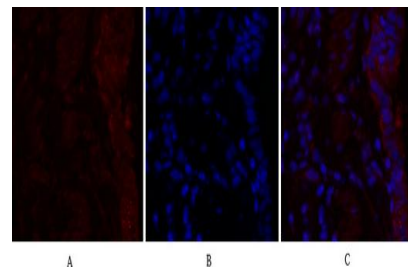
DATA:



Western blot analysis of RhoA in HepG2 lysates using RhoA antibody.



Immunofluorescence analysis of RhoA in rat lung using Rho A antibody, and DAPI.



Immunofluorescence analysis of RhoA in mouse lung using Rho A antibody, and DAPI

Immunohistochemistry analysis of paraffin-embedded Human stomach cancer tissue using Rho A antibody. High-pressure and temperature Sodium Citrate pH 6.0 was used for antigen retrieval. Negative control was used by secondary antibody only.

Note:

For research use only, not for use in diagnostic procedure.

Bioworld Technology, Inc.

Add: 1660 South Highway 100, Suite 500 St. Louis Park, MN 55416, USA.

Email: info@bioworld.com

Tel: 6123263284

Fax: 6122933841

Bioworld technology, co. Ltd.

Add: No 9, weidi road Qixia District Nanjing, 210046, P. R. China.

Email: info@biogot.com

Tel: 0086-025-68037686

Fax: 0086-025-68035151