

RPL7 polyclonal antibody

Catalog: BZ16455

Host: Rabbit

Reactivity: Human, Mouse, Rat

BackGround:

Component of the large ribosomal subunit (PubMed:12962325). Binds to G-rich structures in 28S rRNA and in mRNAs. Plays a regulatory role in the translation apparatus; inhibits cell-free translation of mRNAs.

Product:

Liquid in PBS containing 50% glycerol, 0.5% BSA and 0.02% sodium azide, pH 7.3.

Molecular Weight:

Calculated MW: 29 kDa; Observed MW: 32 kDa

Swiss-Prot:

P18124

Purification&Purity:

Affinity Purified

Applications:

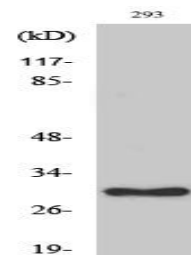
WB: 1/500-1/1000 IHC: 1/50-1/100 ELISA: 1/10000

Storage&Stability:

Store at 4 °C short term. Aliquot and store at -20 °C long term. Avoid freeze-thaw cycles.

Isotype:

IgG

DATA:

Western blot analysis of RPL7 in various lysates using RPL7 antibody.

Western blot analysis of RPL7 in cat sample lysates using Ribosomal Protein L7 antibody.

Western blot analysis of RPL7 in mouse kidney, mouse brain, HELA, KB, SH-SY5Y, 293T and 3T3 lysates using Ribosomal Protein L7 antibody.

Western blot analysis of RPL7 in 293 and HeLa lysates using RPL7 antibody. The lane on the right is blocked with the synthesized peptide.

Note:

For research use only, not for use in diagnostic procedure.

Bioworld Technology, Inc.

Add: 1660 South Highway 100, Suite 500 St. Louis Park, MN 55416, USA.

Email: info@bioworld.com

Tel: 6123263284

Fax: 6122933841

Bioworld technology, co. Ltd.

Add: No 9, weidi road Qixia District Nanjing, 210046, P. R. China.

Email: info@biogot.com

Tel: 0086-025-68037686

Fax: 0086-025-68035151