

IL-6 polyclonal antibody

Catalog: BZ16464

Host: Rabbit

Reactivity: Human

BackGround:

Interleukine 6 (IL-6) is a cytokine produced primarily by stimulated monocytes, fibroblasts and epithelial cells. It has a wide variety of biological functions through activating a cell surface signaling assembly composed of IL6, IL6RA, and the shared signaling receptor gp130. The cytokine plays an essential role in the final differentiation of b-cells into Ig secreting cells, and induces myeloma, plasmacytoma growth, nerve cells differentiations. In addition, IL-6 is an important regulator of acute phase reaction.

Product:

Liquid in PBS containing 50% glycerol, 0.5% BSA and 0.02% sodium azide, pH 7.3.

Molecular Weight:

Calculated MW: 24 kDa; Observed MW: 24 kDa

Swiss-Prot:

P05231

Purification&Purity:

Affinity Purified

Applications:

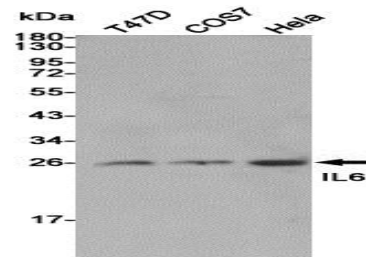
WB: 1/500-1/1000 IHC: 1/50-1/100 ELISA: 1/10000

Storage&Stability:

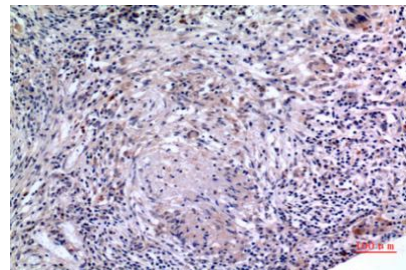
Store at 4 °C short term. Aliquot and store at -20 °C long term. Avoid freeze-thaw cycles.

Isotype:

IgG

DATA:

Western blot analysis of IL-6 in T47D, COS7 and HeLa lysates using IL-6 antibody.



Western blot analysis of IL-6 in K562 lysates using IL-6 antibody.

Immunohistochemistry analysis of paraffin-embedded Human lung using IL-6 antibody. High-pressure and temperature Sodium Citrate pH 6.0 was used for antigen retrieval.

Immunohistochemistry analysis of paraffin-embedded Human lung using IL-6 antibody. High-pressure and temperature Sodium Citrate pH 6.0 was used for antigen retrieval.

Note:

For research use only, not for use in diagnostic procedure.

Bioworld Technology, Inc.

Add: 1660 South Highway 100, Suite 500 St. Louis Park, MN 55416, USA.

Email: info@bioworld.com

Tel: 6123263284

Fax: 6122933841

Bioworld technology, co. Ltd.

Add: No 9, weidi road Qixia District Nanjing, 210046, P. R. China.

Email: info@biogot.com

Tel: 0086-025-68037686

Fax: 0086-025-68035151