

Phospho-PKA alpha/beta/gamma (Thr197) polyclonal antibody

Catalog: BZ16474

Host: Rabbit

Reactivity: Human, Mouse, Rat

Background:

PRKACA (protein kinase cAMP-activated catalytic subunit alpha) encodes one of the catalytic subunits of protein kinase A, which exists as a tetrameric holoenzyme with two regulatory subunits and two catalytic subunits, in its inactive form. cAMP causes the dissociation of the inactive holoenzyme into a dimer of regulatory subunits bound to four cAMP and two free monomeric catalytic subunits. Four different regulatory subunits and three catalytic subunits have been identified in humans. cAMP-dependent phosphorylation of proteins by protein kinase A is important to many cellular processes, including differentiation, proliferation, and apoptosis. Constitutive activation of this gene caused either by somatic mutations, or genomic duplications of regions that include this gene, have been associated with hyperplasias and adenomas of the adrenal cortex and are linked to corticotropin-independent Cushing's syndrome. Alternative splicing results in multiple transcript variants encoding different isoforms. Tissue-specific isoforms that differ at the N-terminus have been described, and these isoforms may differ in the post-translational modifications that occur at the N-terminus of some isoforms.

Product:

Liquid in PBS containing 50% glycerol, 0.5% BSA and 0.02% sodium azide, pH 7.3.

Molecular Weight:

Calculated MW: 40 kDa; Observed MW: 40 kDa

Swiss-Prot:

P17612/P22694/P22612

Purification&Purity:

Affinity Purified

Applications:

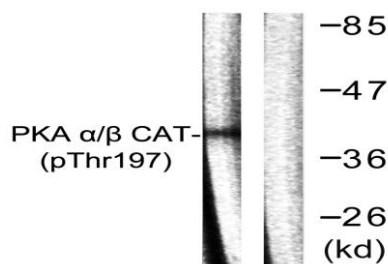
WB: 1/500-1/1000 IHC: 1/50-1/100 IF: 1/50-1/200
ELISA: 1/10000

Storage&Stability:

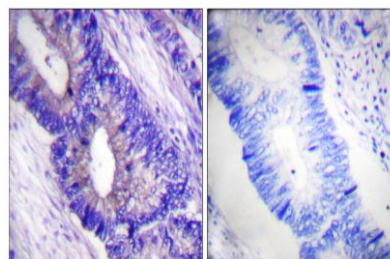
Store at 4 °C short term. Aliquot and store at -20 °C long term. Avoid freeze-thaw cycles.

Isotype:

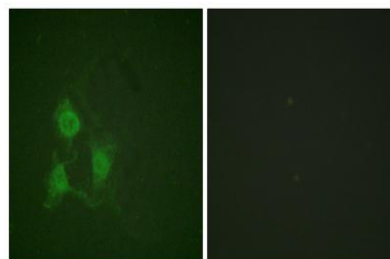
IgG

DATA:

EnzymeLinked Immunosorbent Assay for Immunogen Phospho-peptide and NonPhospho-peptide, using PKA CAT (Phospho-Thr19) antibody



Immunofluorescence analysis of Phospho-PKA alpha/beta/gamma in A549 using Phospho-PKA alpha/beta/gamma antibody. The picture on the right is blocked with the Phospho-peptide.



Immunohistochemistry analysis of paraffin-embedded Human colon carcinoma using Phospho-PKA alpha/beta/gamma antibody.

High-pressure and temperature Sodium Citrate pH 6.0 was used for antigen retrieval. Sample with blocking peptide on the right.

Bioworld Technology, Inc.

Add: 1660 South Highway 100, Suite 500 St. Louis Park, MN 55416, USA.

Email: info@bioworld.com

Tel: 6123263284

Fax: 6122933841

Bioworld technology, co. Ltd.

Add: No 9, weidi road Qixia District Nanjing, 210046, P. R. China.

Email: info@biogot.com

Tel: 0086-025-68037686

Fax: 0086-025-68035151



PRODUCT DATA SHEET

Bioworld Technology, Inc.

Western blot analysis of Phospho-PKA alpha/beta/gamma in mouse brain lysates using Phospho-PKA alpha/beta/gamma antibody. The lane on the right is blocked with the synthesized peptide.

Note:

For research use only, not for use in diagnostic procedure.

Bioworld Technology, Inc.

Add: 1660 South Highway 100, Suite 500 St. Louis Park, MN 55416, USA.

Email: info@bioworld.com

Tel: 6123263284

Fax: 6122933841

Bioworld technology, co. Ltd.

Add: No 9, weidi road Qixia District Nanjing, 210046, P. R. China.

Email: info@biogot.com

Tel: 0086-025-68037686

Fax: 0086-025-68035151