

Phospho-CD31 (Tyr713) polyclonal antibody

Catalog: BZ16481

Host: Rabbit

Reactivity: Human, Mouse

BackGround:

PECAM-1 a cell adhesion molecule expressed on platelets and at endothelial cell intercellular junctions. Plays a role in modulation of integrin-mediated cell adhesion, transendothelial migration, angiogenesis, apoptosis, cell migration, negative regulation of immune cell signaling, autoimmunity, macrophage phagocytosis, IgE-mediated anaphylaxis and thrombosis. Undergoes alternative splicing, generating multiple isoforms in vascular beds of various tissues.

Product:

Liquid in PBS containing 50% glycerol, 0.5% BSA and 0.02% sodium azide, pH 7.3.

Molecular Weight:

Calculated MW: 83 kDa; Observed MW: 150 kDa

Swiss-Prot:

P16284

Purification&Purity:

Affinity Purified

Applications:

WB: 1/500-1/1000 IHC: 1/50-1/100 IF: 1/50-1/200
ELISA: 1/10000

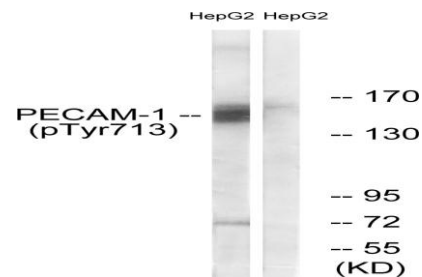
Storage&Stability:

Store at 4 °C short term. Aliquot and store at -20 °C long term. Avoid freeze-thaw cycles.

Isotype:

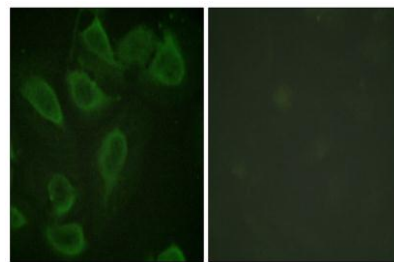
IgG

DATA:



EnzymeLinked Immunosorbent Assay for Immunogen Phospho-peptide and NonPhospho-peptide, using PECAM1 (Phospho-Tyr71 antibody

Immunofluorescence analysis of Phospho-CD31 in HeLa using Phospho-CD31 antibody. The picture on the right is blocked with the Phospho-peptide.



Western blot analysis of Phospho-CD31 in HepG2 lysates using Phospho-CD31 antibody. The lane on the right is blocked with the Phospho-peptide.

Note:

For research use only, not for use in diagnostic procedure.

Bioworld Technology, Inc.

Add: 1660 South Highway 100, Suite 500 St. Louis Park, MN 55416, USA.

Email: info@bioworld.com

Tel: 6123263284

Fax: 6122933841

Bioworld technology, co. Ltd.

Add: No 9, weidi road Qixia District Nanjing, 210046, P. R. China.

Email: info@biogot.com

Tel: 0086-025-68037686

Fax: 0086-025-68035151