

**Cleaved-Caspase 4/5 p20 polyclonal antibody**

Catalog: BZ16485

Host: Rabbit

Reactivity: Human

**BackGround:**

CASP4 (caspase 4) encodes a protein that is a member of the cysteine-aspartic acid protease (caspase) family. Sequential activation of caspases plays a central role in the execution-phase of cell apoptosis. Caspases exist as inactive proenzymes composed of a prodomain and a large and small protease subunit. Activation of caspases requires proteolytic processing at conserved internal aspartic residues to generate a heterodimeric enzyme consisting of the large and small subunits. This caspase is able to cleave and activate its own precursor protein, as well as caspase 1 precursor. When overexpressed, caspase 4 induces cell apoptosis. Alternative splicing results in transcript variants encoding distinct isoforms.

**Product:**

Liquid in PBS containing 50% glycerol, 0.5% BSA and 0.02% sodium azide, pH 7.3.

**Molecular Weight:**

Calculated MW: 43 kDa; Observed MW: 47,22 kDa

**Swiss-Prot:**

P49662/P51878

**Purification&Purity:**

Affinity Purified

**Applications:**

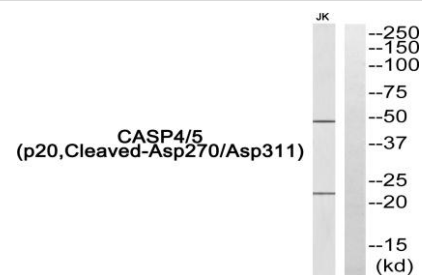
WB: 1/500-1/1000 ELISA: 1/10000

**Storage&Stability:**

Store at 4 °C short term. Aliquot and store at -20 °C long term. Avoid freeze-thaw cycles.

**Isotype:**

IgG

**DATA:**

Western blot analysis of Cleaved-Caspase 4/5 p20 in Jurkat lysates using Caspase 4/5 antibody. The lane on the right is blocked with the Caspase 4/5 peptide.

**Note:**

For research use only, not for use in diagnostic procedure.

**Bioworld Technology, Inc.**

Add: 1660 South Highway 100, Suite 500 St. Louis Park, MN 55416, USA.

Email: [info@bioworld.com](mailto:info@bioworld.com)

Tel: 6123263284

Fax: 6122933841

**Bioworld technology, co. Ltd.**

Add: No 9, weidi road Qixia District Nanjing, 210046, P. R. China.

Email: [info@biogot.com](mailto:info@biogot.com)

Tel: 0086-025-68037686

Fax: 0086-025-68035151