

PSGR polyclonal antibody

Catalog: BZ16491

Host: Rabbit

Reactivity: Human,Rat

BackGround:

Probable G protein-coupled receptor that is activated by the short chain fatty acids (SCFA) acetate and propionate. In response to SCFA, may positively regulate renin secretion and increase blood pressure (PubMed:23401498). May also be activated by steroid hormones and regulate cell proliferation (PubMed:19389702). May also function as an olfactory receptor being activated by beta-ionone (PubMed:19389702).

Product:

Liquid in PBS containing 50% glycerol, 0.5% BSA and 0.02% sodium azide, pH 7.3.

Molecular Weight:

Calculated MW: 35 kDa; Observed MW: 35 kDa

Swiss-Prot:

Q9H255

Purification&Purity:

Affinity Purified

Applications:

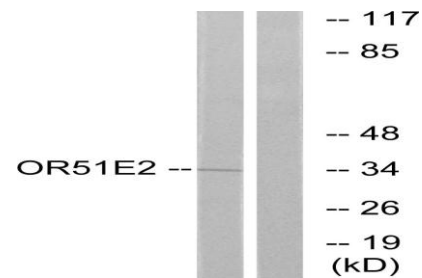
WB: 1/500-1/1000 IF: 1/50-1/200 ELISA: 1/10000

Storage&Stability:

Store at 4 °C short term. Aliquot and store at -20 °C long term. Avoid freeze-thaw cycles.

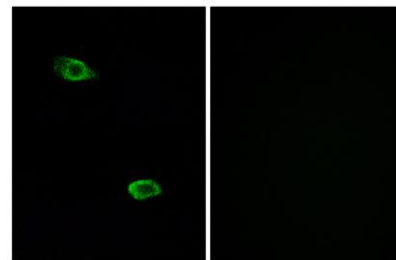
Isotype:

IgG

DATA:

Immunofluorescence analysis of PSGR in A549 using PSGR antibody. Sample with blocking peptide on the right.

Western blot analysis of PSGR in Jurkat lysates using PSGR antibody. The lane on the right is blocked with the synthesized peptide.



Western blot analysis of PSGR in HepG2 lysates using PSGR antibody

Note:

For research use only, not for use in diagnostic procedure.

Bioworld Technology, Inc.

Add: 1660 South Highway 100, Suite 500 St. Louis Park, MN 55416, USA.

Email: info@bioworld.com

Tel: 6123263284

Fax: 6122933841

Bioworld technology, co. Ltd.

Add: No 9, weidi road Qixia District Nanjing, 210046, P. R. China.

Email: info@biogot.com

Tel: 0086-025-68037686

Fax: 0086-025-68035151