

**Rab2B polyclonal antibody**

Catalog: BZ16492

Host: Rabbit

Reactivity: Human, Mouse, Rat

BackGround:

Required for protein transport from the endoplasmic reticulum to the Golgi complex.

Product:

Liquid in PBS containing 50% glycerol, 0.5% BSA and 0.02% sodium azide, pH 7.3.

Molecular Weight:

Calculated MW: 24 kDa; Observed MW: 24 kDa

Swiss-Prot:

Q8WUD1

Purification&Purity:

Affinity Purified

Applications:

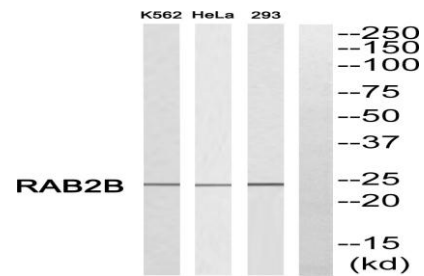
WB: 1/500-1/1000 ELISA: 1/10000

Storage&Stability:

Store at 4 °C short term. Aliquot and store at -20 °C long term. Avoid freeze-thaw cycles.

Isotype:

IgG

DATA:

Western blot analysis of Rab2B in K562, HeLa, 293 lysates using RAB2B antibody. The lane on the right is blocked with the RAB2B peptide.

Western blot analysis of Rab2B in 293 lysates using RAB2B antibody.

Note:

For research use only, not for use in diagnostic procedure.

Bioworld Technology, Inc.

Add: 1660 South Highway 100, Suite 500 St. Louis Park, MN 55416, USA.

Email: info@bioworld.com

Tel: 6123263284

Fax: 6122933841

Bioworld technology, co. Ltd.

Add: No 9, weidi road Qixia District Nanjing, 210046, P. R. China.

Email: info@biogot.com

Tel: 0086-025-68037686

Fax: 0086-025-68035151