

**GAS41 polyclonal antibody**

Catalog: BZ16499

Host: Rabbit

Reactivity: Human, Mouse

**BackGround:**

YEATS domain containing 4 (YEATS4) Homo sapiens  
The protein encoded by this gene is found in the nucleoli. It has high sequence homology to human MLLT1, and yeast and human MLLT3 proteins. Both MLLT1 and MLLT3 proteins belong to a class of transcription factors, indicating that the encoded protein might also represent a transcription factor. This protein is thought to be required for RNA transcription. This gene has been shown to be amplified in tumors. Alternative splicing results in multiple transcript variants encoding different isoforms. [provided by RefSeq, Jul 2014],

**Product:**

Liquid in PBS containing 50% glycerol, 0.5% BSA and 0.02% sodium azide, pH 7.3.

**Molecular Weight:**

Calculated MW: 26 kDa; Observed MW: 26 kDa

**Swiss-Prot:**

O95619

**Purification&Purity:**

Affinity Purified

**Applications:**

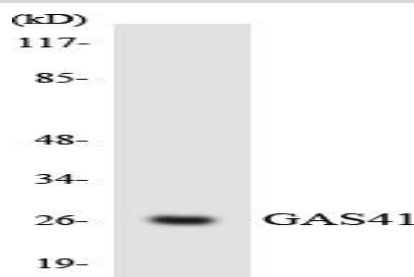
WB: 1/500-1/1000 ELISA: 1/10000

**Storage&Stability:**

Store at 4 °C short term. Aliquot and store at -20 °C long term. Avoid freeze-thaw cycles.

**Isotype:**

IgG

**DATA:**

Western blot analysis of GAS41 in HT-29 lysates using GAS41 antibody.

**Note:**

For research use only, not for use in diagnostic procedure.

**Bioworld Technology, Inc.**

Add: 1660 South Highway 100, Suite 500 St. Louis Park, MN 55416, USA.

Email: [info@bioworld.com](mailto:info@bioworld.com)

Tel: 6123263284

Fax: 6122933841

**Bioworld technology, co. Ltd.**

Add: No 9, weidi road Qixia District Nanjing, 210046, P. R. China.

Email: [info@biogot.com](mailto:info@biogot.com)

Tel: 0086-025-68037686

Fax: 0086-025-68035151