

Alliinase polyclonal antibody

Catalog: BZ16506

Host: Rabbit

Reactivity: Plants

BackGround:

Able to cleave the C-S bond of sulfoxide derivatives of Cys to produce allicin, thus giving rise to all sulfur compounds which are responsible for most of the properties of garlic, such as the specific smell and flavor as well as the health benefits like blood lipid or blood pressure lowering.

Product:

Liquid in PBS containing 50% glycerol, 0.5% BSA and 0.02% sodium azide, pH 7.3.

Molecular Weight:

Calculated MW: 56 kDa; Observed MW: 50 kDa

Swiss-Prot:

Q01594

Purification&Purity:

Affinity Purified

Applications:

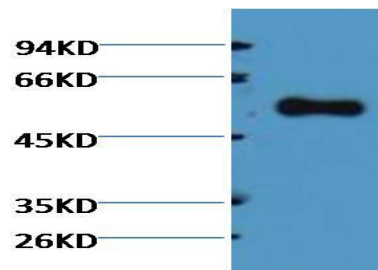
WB: 1/500-1/1000

Storage&Stability:

Store at 4 °C short term. Aliquot and store at -20 °C long term. Avoid freeze-thaw cycles.

Isotype:

IgG

DATA:

Western blot analysis of Alliinase in purified alliinase lysates using Alliinase antibody.

Note:

For research use only, not for use in diagnostic procedure.

Bioworld Technology, Inc.

Add: 1660 South Highway 100, Suite 500 St. Louis Park, MN 55416, USA.

Email: info@bioworld.com

Tel: 6123263284

Fax: 6122933841

Bioworld technology, co. Ltd.

Add: No 9, weidi road Qixia District Nanjing, 210046, P. R. China.

Email: info@biogot.com

Tel: 0086-025-68037686

Fax: 0086-025-68035151