

**PEPC polyclonal antibody**

Catalog: BZ16514

Host: Rabbit

Reactivity: Plants

BackGround:

Hydrolyzes a variety of proteins.

Product:

Liquid in PBS containing 50% glycerol, 0.5% BSA and 0.02% sodium azide, pH 7.3.

Molecular Weight:

Calculated MW: 42 kDa; Observed MW: 105-109 kDa

Swiss-Prot:

P20142

Purification&Purity:

Affinity Purified

Applications:

WB: 1/500-1/1000

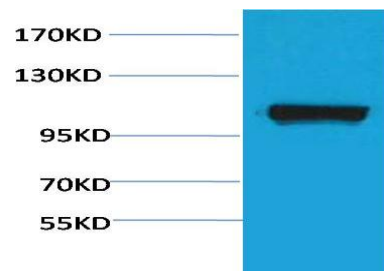
Storage&Stability:

Store at 4 °C short term. Aliquot and store at -20 °C long

term. Avoid freeze-thaw cycles.

Isotype:

IgG

DATA:

Western blot analysis of PEPC in Maize lysates using PEPC antibody.

Note:

For research use only, not for use in diagnostic procedure.

Bioworld Technology, Inc.Add: 1660 South Highway 100, Suite 500 St. Louis Park,
MN 55416, USA.Email: info@bioworld.com

Tel: 6123263284

Fax: 6122933841

Bioworld technology, co. Ltd.Add: No 9, weidi road Qixia District Nanjing, 210046,
P. R. China.Email: info@biogot.com

Tel: 0086-025-68037686

Fax: 0086-025-68035151