

**Elongation Factor 1A2 Binding Protein polyclonal antibody**

Catalog: BZ16524

Host: Rabbit

Reactivity: Human, Mouse, Rat

**BackGround:**

Predicted to be involved in homophilic cell adhesion via plasma membrane adhesion molecules; retina layer formation; and synapse assembly. Predicted to be located in Z disc and nucleus. Predicted to be active in synapse.

**Product:**

Liquid in PBS containing 50% glycerol, 0.5% BSA and 0.02% sodium azide, pH 7.3.

**Molecular Weight:**

Calculated MW: 138 kDa; Observed MW: 115 kDa

**Swiss-Prot:**

Q86VF2

**Purification&Purity:**

Affinity Purified

**Applications:**

WB: 1/500-1/1000 IHC: 1/50-1/100

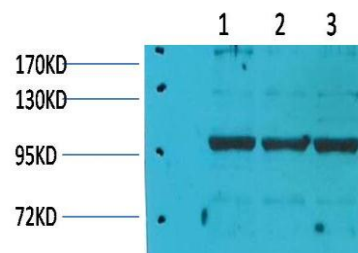
**Storage&Stability:**

Store at 4 °C short term. Aliquot and store at -20 °C long

term. Avoid freeze-thaw cycles.

**Isotype:**

IgG

**DATA:**

Western blot analysis of Elongation Factor 1A2 Binding Protein in Pig Skeletal Muscle, rat Skeletal Muscle, rat Skeletal Muscle lysates using eEF1A2 antibody.

**Note:**

For research use only, not for use in diagnostic procedure.

**Bioworld Technology, Inc.**

Add: 1660 South Highway 100, Suite 500 St. Louis Park, MN 55416, USA.

Email: [info@bioworld.com](mailto:info@bioworld.com)

Tel: 6123263284

Fax: 6122933841

**Bioworld technology, co. Ltd.**

Add: No 9, weidi road Qixia District Nanjing, 210046, P. R. China.

Email: [info@biogot.com](mailto:info@biogot.com)

Tel: 0086-025-68037686

Fax: 0086-025-68035151