

**NF-KB p65 polyclonal antibody**

Catalog: BZ16533

Host: Rabbit

Reactivity: Human, Mouse

**BackGround:**

NFKB1 (MIM 164011) or NFKB2 (MIM 164012) is bound to REL (MIM 164910), RELA, or RELB (MIM 604758) to form the NFKB complex. The p50 (NFKB1)/p65 (RELA) heterodimer is the most abundant form of NFKB. The NFKB complex is inhibited by I-kappa-B proteins (NFKBIA, MIM 164008 or NFKBIB, MIM 604495), which inactivate NFKB by trapping it in the cytoplasm.

**Product:**

Rabbit IgG in phosphate buffered saline, pH 7.4, 150mM NaCl, 0.02% sodium azide and 50% glycerol.

**Molecular Weight:**

Calculated MW: 60 kDa; Observed MW: 65 kDa

**Swiss-Prot:**

Q04206

**Purification&Purity:**

Affinity Purified

**Applications:**

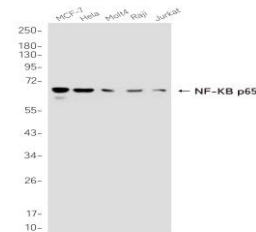
WB: 1/500-1/1000 IHC: 1/50-1/100 IF: 1/50-1/200  
IP: 1/20 FC: 1/50-1/100

**Storage&Stability:**

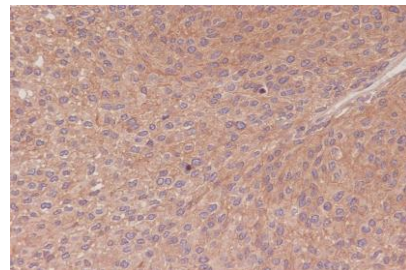
Store at 4 °C short term. Aliquot and store at -20 °C long term. Avoid freeze-thaw cycles.

**Isotype:**

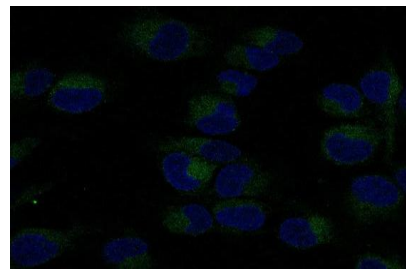
IgG

**DATA:**

Immunofluorescence analysis of NF-KB p65 in HT-1080 using NFκB p65 antibody.



Western blot analysis of NF-KB p65 in MCF-7, HeLa, Molt4, Raji and Jurkat lysates using NF-KB p65 antibody.



Western blot analysis of NFκB p65 expression in HeLa lysates using NF-KB p65R antibody

Immunohistochemistry analysis of paraffin-embedded Human transitional carcinoma of bladder using NFκB p65 antibody. High-pressure and temperature Sodium Citrate pH 6.0 was used for antigen retrieval.

**Note:**

For research use only, not for use in diagnostic procedure.

**Bioworld Technology, Inc.**

Add: 1660 South Highway 100, Suite 500 St. Louis Park, MN 55416, USA.

Email: [info@bioworld.com](mailto:info@bioworld.com)

Tel: 6123263284

Fax: 6122933841

**Bioworld technology, co. Ltd.**

Add: No 9, weidi road Qixia District Nanjing, 210046, P. R. China.

Email: [info@biogot.com](mailto:info@biogot.com)

Tel: 0086-025-68037686

Fax: 0086-025-68035151