

**Rad51 polyclonal antibody**

Catalog: BZ16550

Host: Rabbit

Reactivity: Human, Mouse, Rat

**BackGround:**

Rad51 participates in a common DNA damage response pathway associated with the activation of homologous recombination and double-strand break repair. Binds to single and double-stranded DNA and exhibits DNA-dependent ATPase activity. Underwinds duplex DNA and forms helical nucleoprotein filaments.

**Product:**

Rabbit IgG in phosphate buffered saline, pH 7.4, 150mM NaCl, 0.02% sodium azide and 50% glycerol.

**Molecular Weight:**

Calculated MW: 37 kDa; Observed MW: 37 kDa

**Swiss-Prot:**

Q06609

**Purification&Purity:**

Affinity Purified

**Applications:**

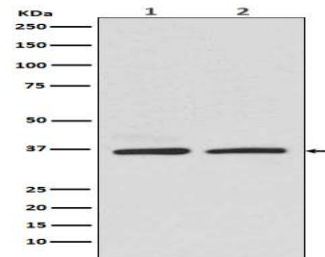
WB: 1/500-1/1000 IHC: 1/50-1/100 IF: 1/50-1/200  
IP: 1/20 FC: 1/50-1/100

**Storage&Stability:**

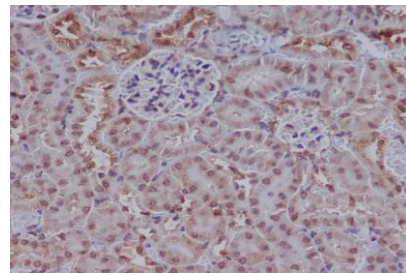
Store at 4 °C short term. Aliquot and store at -20 °C long term. Avoid freeze-thaw cycles.

**Isotype:**

IgG

**DATA:**

Western blot analysis of Rad51 in HEK293 lysates; K562 lysates using Rad51 antibody.



Immunohistochemistry analysis of paraffin-embedded mouse kidney using Rad51 antibody. High-pressure and temperature Sodium Citrate pH 6.0 was used for antigen retrieval.

**Note:**

For research use only, not for use in diagnostic procedure.

**Bioworld Technology, Inc.**

Add: 1660 South Highway 100, Suite 500 St. Louis Park, MN 55416, USA.

Email: [info@bioworld.com](mailto:info@bioworld.com)

Tel: 6123263284

Fax: 6122933841

**Bioworld technology, co. Ltd.**

Add: No 9, weidi road Qixia District Nanjing, 210046, P. R. China.

Email: [info@biogot.com](mailto:info@biogot.com)

Tel: 0086-025-68037686

Fax: 0086-025-68035151