

ERR β polyclonal antibody

Catalog: GCP06

Host: Rabbit

Reactivity: Human

Background:

ERR β / γ Antibody (E-1) is a high quality monoclonal ERR β / γ antibody (also designated ERR β / γ antibody) suitable for the detection of the ERR β / γ protein of mouse, rat and human origin. ERR β / γ Antibody (E-1) is available as both the non-conjugated anti-ERR β / γ antibody form, as well as multiple conjugated forms of anti-ERR β / γ antibody, including agarose, HRP, PE, FITC and multiple Alexa Fluor® conjugates. Estrogen and progesterone receptors are members of a family of transcription factors that are regulated by the binding of their cognate ligands. The interaction of hormone-bound estrogen receptors with estrogen responsive elements (EREs) alters transcription of ERE-containing genes. Estrogen receptor-related proteins (ERR α , β and γ) are orphan nuclear receptors. Like estrogen receptors, ERRs bind specifically to EREs to activate reporter genes. ERR β , also known as steroid hormone receptor ERR2 or estrogen receptor-like 2, is expressed during mammary gland development and is critical in embryo development. The loss of ERR β results in severely impaired chorion formation leading to placental failure and embryonic death. ERR β also potentially represses the transcriptional activity of Nrf2. ERR γ , also known as ERR3, is abundantly expressed in fetal heart. The loss of ERR γ results in lactatemia and death within the first week of life.

Product:

Rabbit IgG, 1mg/ml in PBS with 0.02% sodium azide, 50% glycerol, pH7.2

Molecular Weight:

~ 48 kDa

Swiss-Prot:

O95718

Purification&Purity:

The antibody was affinity-purified from rabbit antiserum by affinity-chromatography using epitope-specific im-

munogen and the purity is > 95% (by SDS-PAGE).

Applications:

WB: 1:1000~1:2000

IF: 1:50~1:200

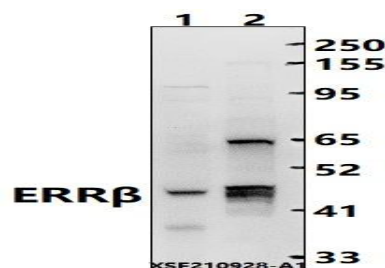
Storage&Stability:

Store at 4 °C short term. Aliquot and store at -20 °C long term. Avoid freeze-thaw cycles.

Specificity:

ERR β polyclonal antibody detects endogenous levels of ERR β protein.

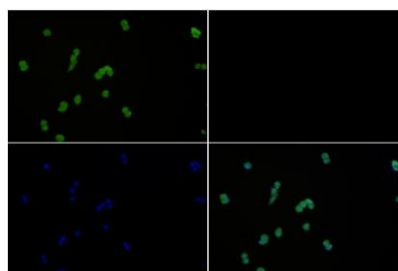
DATA:



Western blot (WB) analysis of ERR β polyclonal antibody at 1:1000 dilution

Lane1:MCF-7 whole cell lysate(40ug)

Lane2:MCF-7 nuclear lysate(20ug)



Immunofluorescence analysis of MCF-7 cells using ERR β antibody at dilution of 1:50.

Note:

For research use only, not for use in diagnostic procedure.

Bioworld Technology, Inc.

Add: 1660 South Highway 100, Suite 500 St. Louis Park, MN 55416, USA.

Email: info@bioworld.com

Tel: 6123263284

Fax: 6122933841

Bioworld technology, co. Ltd.

Add: No 9, weidi road Qixia District Nanjing, 210046, P. R. China.

Email: info@biogot.com

Tel: 0086-025-68037686

Fax: 0086-025-68035151



PRODUCT DATA SHEET

Bioworld Technology, Inc.

Bioworld Technology, Inc.

Add: 1660 South Highway 100, Suite 500 St. Louis Park,
MN 55416, USA.

Email: info@bioworld.com

Tel: 6123263284

Fax: 6122933841

Bioworld technology, co. Ltd.

Add: No 9, weidi road Qixia District Nanjing, 210046,
P. R. China.

Email: info@biogot.com

Tel: 0086-025-68037686

Fax: 0086-025-68035151