

## PPP1CB Rabbit monoclonal antibody

Catalog: MB0026

Host: Rabbit

Reactivity: Human, Mouse, Rat

### BackGround:

Protein phosphatase (PP1) is essential for cell division, it participates in the regulation of glycogen metabolism, muscle contractility and protein synthesis. Involved in regulation of ionic conductances and long-term synaptic plasticity. Component of the PTW/PP1 phosphatase complex, which plays a role in the control of chromatin structure and cell cycle progression during the transition from mitosis into interphase.

### Product:

0.3mg/ml in 50mM Tris-Glycine(pH 7.4), 0.15M NaCl, 40% Glycerol, 0.01% Sodium azide and 0.05% BSA

### Molecular Weight:

~ 37 kDa

### Swiss-Prot:

P62140

### Purification&Purity:

The antibody was affinity-purified from Rabbit ascites by affinity-chromatography using epitope-specific immunogen and the purity is > 95% (by SDS-PAGE).

### Applications:

WB: 1:500~1:1000

IF: 1:50~1:200

IHC: 1:50~1:100

ICC: 1:50~1:200

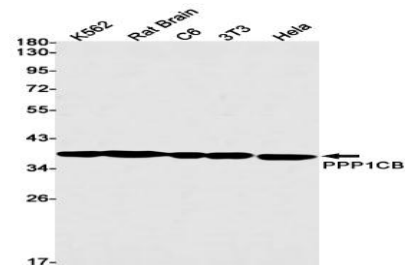
### Storage&Stability:

Store at 4 °C short term. Aliquot and store at -20 °C long term. Avoid freeze-thaw cycles.

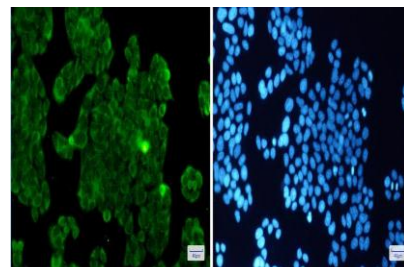
### Specificity:

PPP1CB Rabbit monoclonal antibody detects endogenous levels of PPP1CB protein.

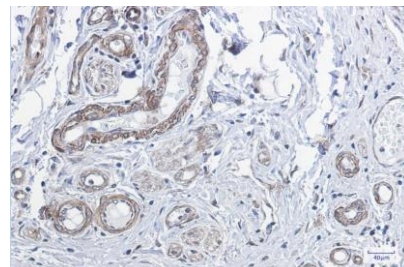
### DATA:



Western blot analysis of PPP1CB in K562, rat Brain, C6, 3T3, HeLa lysates using PP1C beta antibody.



Immunocytochemistry analysis of PPP1CB(green) in HeLa using PPP1CB antibody, and DAPI(blue)



Immunohistochemistry analysis of paraffin-embedded Human colon cancer using PPP1CB antibody. High-pressure and temperature Sodium Citrate pH 6.0 was used for antigen retrieval.

### Note:

For research use only, not for use in diagnostic procedure.

### Bioworld Technology, Inc.

Add: 1660 South Highway 100, Suite 500 St. Louis Park, MN 55416, USA.

Email: [info@bioworld.com](mailto:info@bioworld.com)

Tel: 6123263284

Fax: 6122933841

### Bioworld technology, co. Ltd.

Add: No 9, weidi road Qixia District Nanjing, 210046, P. R. China.

Email: [info@biogot.com](mailto:info@biogot.com)

Tel: 0086-025-68037686

Fax: 0086-025-68035151