

NPM1 monoclonal antibody

Catalog: MB0086

Host: Mouse

Reactivity: Human, Mouse

Background:

Nucleophosmin (NPM; also known as B23, numatrin or NO38) is an abundant phosphoprotein primarily found in nucleoli. It has been implicated in several distinct cellular functions, including assembly and transport of ribosomes, cytoplasmic/nuclear trafficking, regulation of DNA polymerase α activity, centrosome duplication and molecular chaperoning activities. The NPM gene is also known for its fusion with the anaplastic lymphoma kinase (ALK) receptor tyrosine kinase. The NPM portion contributes to transformation by providing a dimerization domain, which results in activation of the fused kinase.

Product:

1mg/ml in PBS with 0.02% sodium azide, 50% glycerol, pH7.2

Molecular Weight:

Predicted band size: 33KDa

Observed band size: 38KDa

Swiss-Prot:

P06748

Purification&Purity:

The antibody was affinity-purified from mouse ascites by affinity-chromatography using epitope-specific immunogen and the purity is > 95% (by SDS-PAGE).

Applications:

WB: 1:1000

ICC: 1:100~200

Storage&Stability:

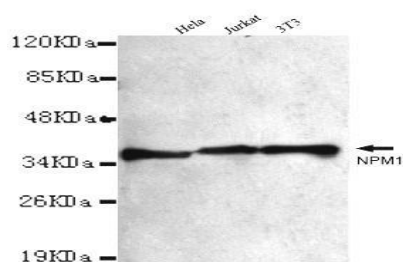
Store at 4 °C short term. Aliquot and store at -20 °C long

term. Avoid freeze-thaw cycles.

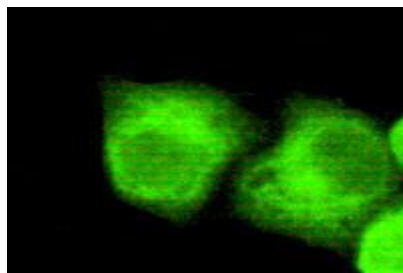
Specificity:

This antibody detects endogenous levels of NPM1 and does not cross-react with related proteins

DATA:



Western blot detection of NPM1 antibody in HeLa, Jurkat&3T3 cell lysates using NPM1 antibody (1:1000 diluted).



Immunocytochemistry of HeLa cells using anti- NPM1 antibody diluted 1:200

Note:

For research use only, not for use in diagnostic procedure.

Bioworld Technology, Inc.

Add: 1660 South Highway 100, Suite 500 St. Louis Park, MN 55416, USA.

Email: info@bioworld.com

Tel: 6123263284

Fax: 6122933841

Bioworld technology, co. Ltd.

Add: No 9, weidi road Qixia District Nanjing, 210046, P. R. China.

Email: info@biogol.com

Tel: 0086-025-68037686

Fax: 0086-025-68035151