

CD31/PECAM-1 monoclonal antibody

Catalog: MB0122

Host: Mouse

Reactivity: Human

BackGround:

CD31 (Platelet Endothelial Cell Adhesion Molecule-1: PECAM-1), a member of the Ig superfamily of cell adhesion molecules, is expressed by circulating platelets, monocytes, neutrophils, some T cells and endothelial cells, and modulates cell adhesion, endothelial cell migration and angiogenesis. CD31 is phosphorylated on Tyr686 at the cytoplasmic carboxy-terminal tail upon various stimuli (e.g. mechanical stress or oxidative stress), presumably by Src family members. The tyrosine phosphorylation mediates associations with a number of SH2 domain containing binding partners such as PI3-kinase, SHIP, PLC γ and SHP-2. Thus, CD31 serves as a scaffold for various signaling molecules.

Product:

1mg/ml in PBS with 0.02% sodium azide, 50% glycerol, pH7.2

Molecular Weight:

Predicted band size: 130KDa

Observed band size: 130KDa

Swiss-Prot:

P16284

Purification&Purity:

The antibody was affinity-purified from mouse ascites by affinity-chromatography using epitope-specific immuno-

gen and the purity is > 95% (by SDS-PAGE).

Applications:

WB:1:1000

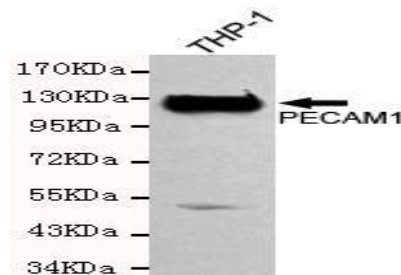
Storage&Stability:

Store at 4 °C short term. Aliquot and store at -20 °C long term. Avoid freeze-thaw cycles.

Specificity:

CD31/PECAM-1 mAb detects endogenous levels of CD31 protein.

DATA:



Western blot detection of PECAM1 antibody in THP-1 cell lysate using CD31/PECAM-1 antibody (1:1000 diluted).

Note:

For research use only, not for use in diagnostic procedure.

Bioworld Technology, Inc.

Add: 1660 South Highway 100, Suite 500 St. Louis Park, MN 55416, USA.

Email: info@bioworld.com

Tel: 6123263284

Fax: 6122933841

Bioworld technology, co. Ltd.

Add: No 9, weidi road Qixia District Nanjing, 210046, P. R. China.

Email: info@biogot.com

Tel: 0086-025-68037686

Fax: 0086-025-68035151