

Phostensin monoclonal antibody

Catalog: MB0157

Host: Mouse IgG1

Reactivity: Human

BackGround:

In eukaryotes, the phosphorylation and dephosphorylation of proteins on serine and threonine residues is an essential means of regulating a broad range of cellular functions, including division, homeostasis and apoptosis. A group of proteins that are intimately involved in this process are the protein phosphatases, specifically PP1 (protein phosphatase 1), which is targeted to different substrates throughout the cell. Phostensin, also known as KI-AA1949, is a 613 amino acid protein that localizes to both the cytoplasm and the cytoskeleton. Expressed predominately in spleen, ovary, lung and liver tissue, phostensin functions as a regulatory subunit that interacts with and targets PP1 to F-Actin in the cytoskeleton. Two isoforms of phostensin exist due to alternative splicing events.

Product:

1mg/ml in PBS with 0.02% sodium azide, 50% glycerol, pH7.2

Molecular Weight:

Predicted band size: 120KDa

Observed band size: 120KDa

Swiss-Prot:

Q6NYC8

Purification&Purity:

The antibody was affinity-purified from mouse ascites by

affinity-chromatography using epitope-specific immunogen and the purity is > 95% (by SDS-PAGE).

Applications:

WB: 1:200~1000

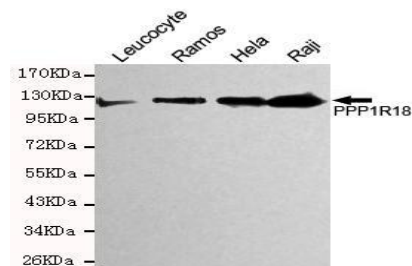
Storage&Stability:

Store at 4 °C short term. Aliquot and store at -20 °C long term. Avoid freeze-thaw cycles.

Specificity:

This antibody detects endogenous levels of Phostensin and does not cross-react with related proteins

DATA:



Western blot detection of PPP1R18 in HeLa, Raji, Ramos&Leucocyte cell lysates and using PPP1R18 antibody (1:200 diluted).

Note:

For research use only, not for use in diagnostic procedure.

Bioworld Technology, Inc.

Add: 1660 South Highway 100, Suite 500 St. Louis Park, MN 55416, USA.

Email: info@bioworld.com

Tel: 6123263284

Fax: 6122933841

Bioworld technology, co. Ltd.

Add: No 9, weidi road Qixia District Nanjing, 210046, P. R. China.

Email: info@biogot.com

Tel: 0086-025-68037686

Fax: 0086-025-68035151