

**Phospho-AP2M1 (Thr156) monoclonal antibody**

Catalog: MB10551

Host: Rabbit

Reactivity: Human

**BackGround:**

Adaptins are heterotetrameric subunits of adaptors, which are complexes involved in the formation of Clathrin-coated pits for vesicle-mediated endocytosis. Involved in clathrin-dependent endocytosis in which cargo proteins are incorporated into vesicles surrounded by clathrin (clathrin-coated vesicles, CCVs) which are destined for fusion with the early endosome.

**Product:**

50mM Tris-Glycine(pH 7.4), 0.15M NaCl, 40% Glycerol, 0.01% Sodium azide and 0.05% BSA

**Molecular Weight:**

Calculated MW: 50 kDa; Observed MW: 50 kDa

**Swiss-Prot:**

Q96CW1

**Purification&Purity:**

Affinity Purified

**Applications:**

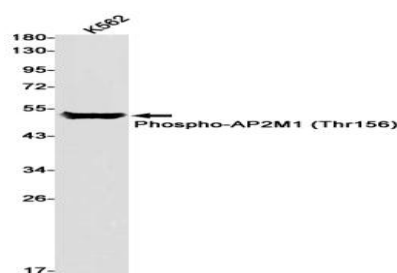
WB: 1/500-1/1000

**Storage&Stability:**

Store at 4 °C short term. Aliquot and store at -20 °C long term. Avoid freeze-thaw cycles.

**Isotype:**

IgG

**DATA:**

Western blot analysis of Phospho-AP2M1 in K562 lysates using Phospho-AP2M1 antibody.

**Note:**

For research use only, not for use in diagnostic procedure.

**Bioworld Technology, Inc.**

Add: 1660 South Highway 100, Suite 500 St. Louis Park, MN 55416, USA.

Email: [info@bioworld.com](mailto:info@bioworld.com)

Tel: 6123263284

Fax: 6122933841

**Bioworld technology, co. Ltd.**

Add: No 9, weidi road Qixia District Nanjing, 210046, P. R. China.

Email: [info@biogot.com](mailto:info@biogot.com)

Tel: 0086-025-68037686

Fax: 0086-025-68035151