

Clathrin Heavy Chain monoclonal antibody

Catalog: MB11969

Host: Rabbit

Reactivity: Human

BackGround:

Clathrin is the major protein of the polyhedral coat of coated pits and vesicles.

Product:

50mM Tris-Glycine(pH 7.4), 0.15M NaCl, 40% Glycerol, 0.01% Sodium azide and 0.05% BSA

Molecular Weight:

Calculated MW: 192 kDa; Observed MW: 192 kDa

Swiss-Prot:

Q00610

Purification&Purity:

Affinity Purified

Applications:

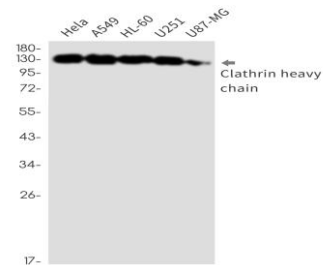
WB: 1/500-1/1000 IHC: 1/50-1/100

Storage&Stability:

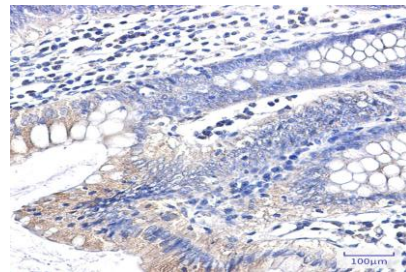
Store at 4 °C short term. Aliquot and store at -20 °C long term. Avoid freeze-thaw cycles.

Isotype:

IgG

DATA:

Western blot analysis of Clathrin heavy chain in HeLa, A549, HL-60, U251, U87-MG lysates using Clathrin Heavy Chain antibody.



Immunohistochemistry analysis of paraffin-embedded Human colon cancer using Clathrin heavy chain antibody. High-pressure and temperature Sodium Citrate pH 6.0 was used for antigen retrieval.

Note:

For research use only, not for use in diagnostic procedure.

Bioworld Technology, Inc.

Add: 1660 South Highway 100, Suite 500 St. Louis Park, MN 55416, USA.

Email: info@bioworld.com

Tel: 6123263284

Fax: 6122933841

Bioworld technology, co. Ltd.

Add: No 9, weidi road Qixia District Nanjing, 210046, P. R. China.

Email: info@biogot.com

Tel: 0086-025-68037686

Fax: 0086-025-68035151