

SHP1 (2B7) monoclonal antibody

Catalog: MB3083

Host: Mouse

Reactivity: Human

BackGround:

The protein encoded by this gene is a member of the protein tyrosine phosphatase (PTP) family. PTPs are known to be signaling molecules that regulate a variety of cellular processes including cell growth, differentiation, mitotic cycle, and oncogenic transformation.

Product:

Liquid in PBS containing 50% glycerol, 0.5% BSA and 0.02% sodium azide, pH 7.3.

Molecular Weight:

Calculated MW: 68 kDa; Observed MW: 68 kDa

Swiss-Prot:

P29350

Purification&Purity:

Affinity Purified

Applications:

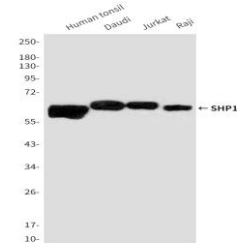
WB: 1/500-1/1000 IP: 1/20

Storage&Stability:

Store at 4 °C short term. Aliquot and store at -20 °C long term. Avoid freeze-thaw cycles.

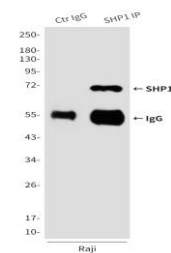
Isotype:

IgG2a

DATA:

Western blot analysis of SHP1 in Human tonsil, Daudi, Jurkat and Raji lysates using SHP1 antibody.

Immunoprecipitation analysis of SHP1 in Raji lysates using SHP1 antibody.

**Note:**

For research use only, not for use in diagnostic procedure.

Bioworld Technology, Inc.

Add: 1660 South Highway 100, Suite 500 St. Louis Park, MN 55416, USA.

Email: info@bioworld.com

Tel: 6123263284

Fax: 6122933841

Bioworld technology, co. Ltd.

Add: No 9, weidi road Qixia District Nanjing, 210046, P. R. China.

Email: info@biogot.com

Tel: 0086-025-68037686

Fax: 0086-025-68035151