

**RPS6 (7B10) monoclonal antibody**

Catalog: MB3103

Host: Mouse

Reactivity: Human, Mouse, Rat, Monkey

**BackGround:**

May play an important role in controlling cell growth and proliferation through the selective translation of particular classes of mRNA.

**Product:**

Liquid in PBS containing 50% glycerol, 0.5% BSA and 0.02% sodium azide, pH 7.3.

**Molecular Weight:**

Calculated MW: 29 kDa; Observed MW: 32 kDa

**Swiss-Prot:**

P62753

**Purification&Purity:**

Affinity Purified

**Applications:**

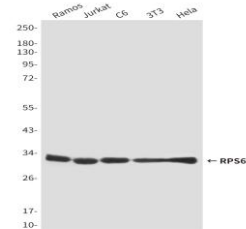
WB: 1/500-1/1000 IF: 1/50-1/200 IP: 1/20

**Storage&Stability:**

Store at 4 °C short term. Aliquot and store at -20 °C long term. Avoid freeze-thaw cycles.

**Isotype:**

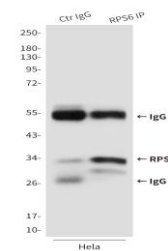
IgG1

**DATA:**

Western blot analysis of S6 Ribosomal Protein in Ramos, Jurkat, C6, 3T3 and HeLa lysates using S6 Ribosomal Protein antibody.

Immunocytochemistry analysis of RPS6 in HeLa using S6 Ribosomal Protein antibody.

Immunoprecipitation analysis of RPS6 in HeLa lysates using S6 Ribosomal Protein antibody.



Western blot analysis of RPS6 in CHO-K1, Raji, Raw264.7 and COS7 lysates using RPS6 antibody

**Note:**

For research use only, not for use in diagnostic procedure.

**Bioworld Technology, Inc.**

Add: 1660 South Highway 100, Suite 500 St. Louis Park, MN 55416, USA.

Email: [info@bioworld.com](mailto:info@bioworld.com)

Tel: 6123263284

Fax: 6122933841

**Bioworld technology, co. Ltd.**

Add: No 9, weidi road Qixia District Nanjing, 210046, P. R. China.

Email: [info@biogot.com](mailto:info@biogot.com)

Tel: 0086-025-68037686

Fax: 0086-025-68035151