

## LPP (6F6) monoclonal antibody

Catalog: MB3139      Host: Mouse      Reactivity: Hu-  
man, Mouse, Rat, Monkey, Hamster

### BackGround:

May play a structural role at sites of cell adhesion in maintaining cell shape and motility. In addition to these structural functions, it may also be implicated in signaling events and activation of gene transcription.

### Product:

Liquid in PBS containing 50% glycerol, 0.5% BSA and 0.02% sodium azide, pH 7.3.

### Molecular Weight:

Calculated MW: 66 kDa; Observed MW: 66 kDa

### Swiss-Prot:

Q93052

### Purification&Purity:

Affinity Purified

### Applications:

WB: 1/500-1/1000    IHC: 1/50-1/100    IF: 1/50-1/200  
IP: 1/20

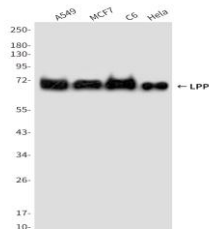
### Storage&Stability:

Store at 4 °C short term. Aliquot and store at -20 °C long term. Avoid freeze-thaw cycles.

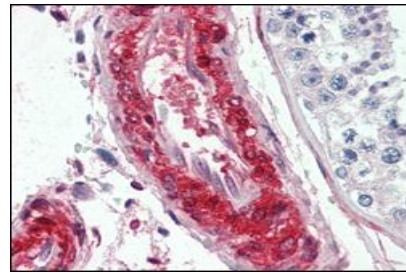
### Isotype:

IgG1

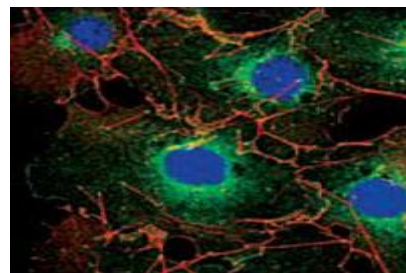
### DATA:



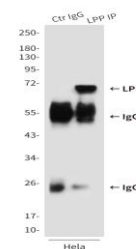
Western blot analysis of LPP in A549, MCF-7, C6 and HeLa lysates using LPP antibody.



Immunofluorescence analysis of LPP in COS using LPP antibody. Red: Actin filaments have been labeled using DY554 phalloidin. Blue: DRAQ5 fluorescent DNA dye.



Immunofluorescence analysis of LPP in HeLa cells using LPP antibody. Red: Actin filaments have been labeled using DY554 phalloidin, and DAPI. DRAQ5 fluorescent DNA dye.



Immunohistochemistry analysis of paraffin-embedded Human vessels tissues using LPP antibody. High-pressure and temperature Sodium Citrate pH 6.0 was used for antigen retrieval.

### Note:

For research use only, not for use in diagnostic procedure.

### Bioworld Technology, Inc.

Add: 1660 South Highway 100, Suite 500 St. Louis Park, MN 55416, USA.

Email: [info@bioworld.com](mailto:info@bioworld.com)

Tel: 6123263284

Fax: 6122933841

### Bioworld technology, co. Ltd.

Add: No 9, weidi road Qixia District Nanjing, 210046, P. R. China.

Email: [info@biogot.com](mailto:info@biogot.com)

Tel: 0086-025-68037686

Fax: 0086-025-68035151