

**Placental Alkaline Phosphatase monoclonal antibody**

Catalog: MB3153

Host: Mouse

Reactivity: Human

**BackGround:**

PLAP may assist in guiding migratory cells and transporting specific molecules, such as fatty acids and immunoglobulins, across the plasma membrane. The three tissue-specific APs identified in human, PLAP, germ cell AP (GCAP) and intestinal AP, are 90-98% homologous and their genes are clustered on chromosome 2q.

**Product:**

Liquid in PBS containing 50% glycerol, 0.5% BSA and 0.02% sodium azide, pH 7.3.

**Molecular Weight:**

Calculated MW: 58 kDa; Observed MW: 70 kDa

**Swiss-Prot:**

P05187

**Purification&Purity:**

Affinity Purified

**Applications:**

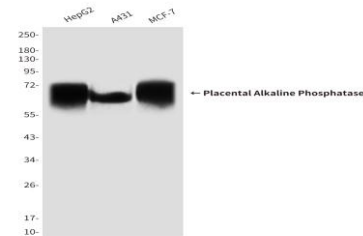
WB: 1/500-1/1000 IHC: 1/50-1/100

**Storage&Stability:**

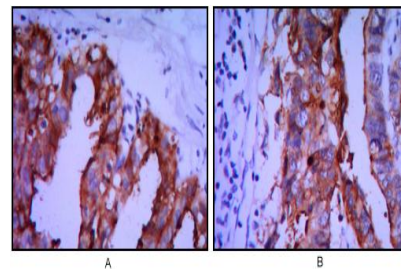
Store at 4 °C short term. Aliquot and store at -20 °C long term. Avoid freeze-thaw cycles.

**Isotype:**

IgG2b

**DATA:**

Western blot analysis of Placental Alkaline Phosphatase in HepG2, A431 and MCF-7 lysates using Placental Alkaline Phosphatase antibody.



Immunohistochemical analysis of paraffin-embedded Human tonsils using Placental Alkaline Phosphatase antibody, with DAB staining. High-pressure and temperature Sodium Citrate pH 6.0 was used for antigen retrieval.

Western blot analysis of Placental Alkaline Phosphatase in HepG2 lysates using Placental Alkaline Phosphatase antibody

Western blot analysis of Placental Alkaline Phosphatase in HeLa, Human Embryo, HepG2 lysates using Placental Alkaline Phosphatase antibody.

**Note:**

For research use only, not for use in diagnostic procedure.

**Bioworld Technology, Inc.**

Add: 1660 South Highway 100, Suite 500 St. Louis Park, MN 55416, USA.

Email: [info@bioworld.com](mailto:info@bioworld.com)

Tel: 6123263284

Fax: 6122933841

**Bioworld technology, co. Ltd.**

Add: No 9, weidi road Qixia District Nanjing, 210046, P. R. China.

Email: [info@biogot.com](mailto:info@biogot.com)

Tel: 0086-025-68037686

Fax: 0086-025-68035151