

**MCM2 (2B5) monoclonal antibody**

Catalog: MB3156

Host: Mouse

Reactivity: Human, Mouse

**BackGround:**

The protein encoded by this gene is one of the highly conserved mini-chromosome maintenance proteins (MCM) that are involved in the initiation of eukaryotic genome replication. The hexameric protein complex formed by MCM proteins is a key component of the pre-replication complex (pre\_RC) and may be involved in the formation of replication forks and in the recruitment of other DNA replication related proteins. This protein forms a complex with MCM4, 6, and 7, and has been shown to regulate the helicase activity of the complex. This protein is phosphorylated, and thus regulated by, protein kinases CDC2 and CDC7. Multiple alternatively spliced transcript variants have been found, but the full-length nature of some variants has not been defined. [provided by RefSeq, Oct 2012]

**Product:**

Liquid in PBS containing 50% glycerol, 0.5% BSA and 0.02% sodium azide, pH 7.3.

**Molecular Weight:**

Calculated MW: 102 kDa; Observed MW: 125 kDa

**Swiss-Prot:**

P49736

**Purification&Purity:**

Affinity Purified

**Applications:**

WB: 1/500-1/1000 IHC: 1/50-1/100 IF: 1/50-1/200

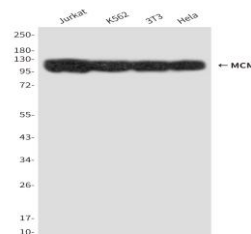
IP: 1/20 FC: 1/50-1/100

**Storage&Stability:**

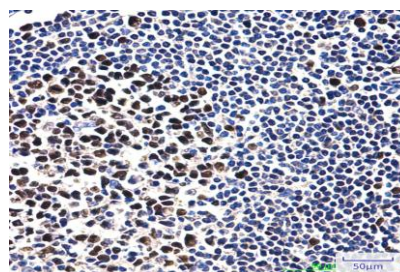
Store at 4 °C short term. Aliquot and store at -20 °C long term. Avoid freeze-thaw cycles.

**Isotype:**

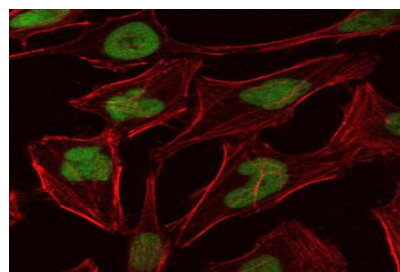
IgG1

**DATA:**

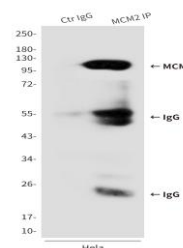
Western blot analysis of MCM2 in Jurkat, K562, 3T3 and HeLa lysates using MCM2 antibody.



Immunoprecipitation analysis of MCM2 in HeLa lysates using MCM2 antibody.



Immunofluorescence analysis of MCM2 in HeLa cells using MCM2 antibody, and DAPI.



Immunohistochemistry analysis of paraffin-embedded Human tonsil tissue using MCM2 antibody. High-pressure and temperature Sodium

**Bioworld Technology, Inc.**

Add: 1660 South Highway 100, Suite 500 St. Louis Park, MN 55416, USA.

Email: [info@bioworld.com](mailto:info@bioworld.com)

Tel: 6123263284

Fax: 6122933841

**Bioworld technology, co. Ltd.**

Add: No 9, weidi road Qixia District Nanjing, 210046, P. R. China.

Email: [info@biogot.com](mailto:info@biogot.com)

Tel: 0086-025-68037686

Fax: 0086-025-68035151



## PRODUCT DATA SHEET

Bioworld Technology, Inc.

---

Citrate pH 6.0 was used for antigen retrieval.

For research use only, not for use in diagnostic procedure.

Note:

---

### Bioworld Technology, Inc.

Add: 1660 South Highway 100, Suite 500 St. Louis Park,  
MN 55416, USA.

Email: [info@bioworld.com](mailto:info@bioworld.com)

Tel: 6123263284

Fax: 6122933841

### Bioworld technology, co. Ltd.

Add: No 9, weidi road Qixia District Nanjing, 210046,  
P. R. China.

Email: [info@biogot.com](mailto:info@biogot.com)

Tel: 0086-025-68037686

Fax: 0086-025-68035151