

## Prostate Specific Antigen monoclonal antibody

Catalog: MB3158

Host: Mouse

Reactivity: Human

### BackGround:

PSA/KLK3 is a member of the glandular kallikrein sub-family of serine proteases. Upon cleavage of 7 amino-terminal amino acids, it is activated to liquefy semen in the seminal coagulum. Although PSA/KLK3 is produced in healthy individuals, investigators have found abnormally high levels in the blood of men with advanced prostate cancer.

### Product:

Liquid in PBS containing 50% glycerol, 0.5% BSA and 0.02% sodium azide, pH 7.3.

### Molecular Weight:

Calculated MW: 29 kDa; Observed MW: 37 kDa

### Swiss-Prot:

P07288

### Purification&Purity:

Affinity Purified

### Applications:

WB: 1/500-1/1000 FC: 1/50-1/100

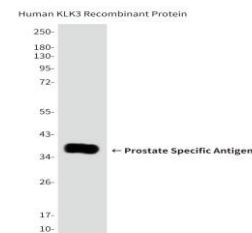
### Storage&Stability:

Store at 4 °C short term. Aliquot and store at -20 °C long term. Avoid freeze-thaw cycles.

### Isotype:

IgG1

### DATA:



Western blot analysis of Prostate Specific Antigen in Human KLK3 using Prostate Specific Antigen antibody.

Flow Cytometry analysis of HeLa cells stained with KLK3 antibody and negative control .

### Note:

For research use only, not for use in diagnostic procedure.

### Bioworld Technology, Inc.

Add: 1660 South Highway 100, Suite 500 St. Louis Park, MN 55416, USA.

Email: [info@bioworld.com](mailto:info@bioworld.com)

Tel: 6123263284

Fax: 6122933841

### Bioworld technology, co. Ltd.

Add: No 9, weidi road Qixia District Nanjing, 210046, P. R. China.

Email: [info@biogot.com](mailto:info@biogot.com)

Tel: 0086-025-68037686

Fax: 0086-025-68035151