

alpha Tubulin (4C9) monoclonal antibody

Catalog: MB3163

Host: Mouse

Reactivity: Human,Rat,Mouse

BackGround:

TUBA1A Tubulin is the major constituent of microtubules. It binds two moles of GTP, one at an exchangeable site on the beta chain and one at a non-exchangeable site on the alpha-chain.

Product:

Liquid in PBS containing 50% glycerol, 0.5% BSA and 0.02% sodium azide, pH 7.3.

Molecular Weight:

Calculated MW: 50 kDa; Observed MW: 50 kDa

Swiss-Prot:

P68363

Purification&Purity:

Affinity Purified

Applications:

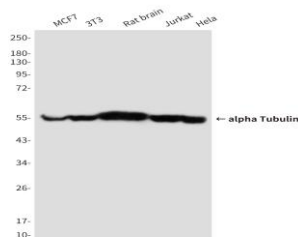
WB: 1/500-1/1000 IHC: 1/50-1/100 IF: 1/50-1/200
IP: 1/20

Storage&Stability:

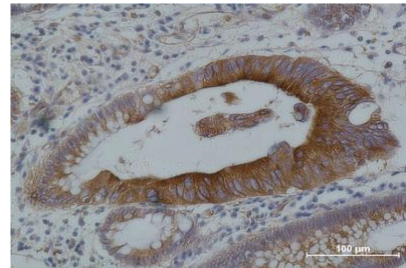
Store at 4 °C short term. Aliquot and store at -20 °C long term. Avoid freeze-thaw cycles.

Isotype:

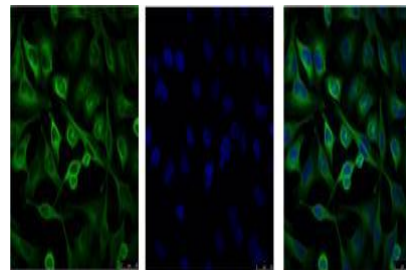
IgG1

DATA:

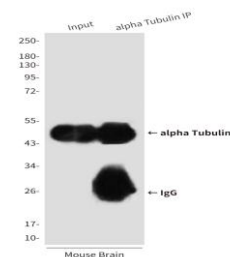
Western blot analysis of alpha Tubulin in MCF-7, 3T3, rat Brain, Jurkat and HeLa lysates using alpha tubulin antibody.



Immunofluorescence analysis of alpha Tubulin in HeLa using alpha Tubulin antibody, and DAPI.



Immunoprecipitation analysis of alpha Tubulin in mouse Brain Tissue lysates using alpha Tubulin antibody.



Immunohistochemistry analysis of paraffin-embedded Human Colon carcinoma using alpha tubulin antibody. High-pressure and temperature Sodium Citrate pH 6.0 was used for antigen retrieval.

Note:

For research use only, not for use in diagnostic procedure.

Bioworld Technology, Inc.

Add: 1660 South Highway 100, Suite 500 St. Louis Park, MN 55416, USA.

Email: info@bioworld.com

Tel: 6123263284

Fax: 6122933841

Bioworld technology, co. Ltd.

Add: No 9, weidi road Qixia District Nanjing, 210046, P. R. China.

Email: info@biogot.com

Tel: 0086-025-68037686

Fax: 0086-025-68035151