

## Galectin 3 (4B2) monoclonal antibody

Catalog: MB3165

Host: Mouse

Reactivity: Human, Mouse

### BackGround:

Galactose-specific lectin which binds IgE. May mediate with the alpha-3, beta-1 integrin the stimulation by CSPG4 of endothelial cells migration. Together with DMBT1, required for terminal differentiation of columnar epithelial cells during early embryogenesis.

### Product:

Liquid in PBS containing 50% glycerol, 0.5% BSA and 0.02% sodium azide, pH 7.3.

### Molecular Weight:

Calculated MW: 26 kDa; Observed MW: 26 kDa

### Swiss-Prot:

P17931

### Purification&Purity:

Affinity Purified

### Applications:

WB: 1/500-1/1000 IHC: 1/50-1/100 IF: 1/50-1/200

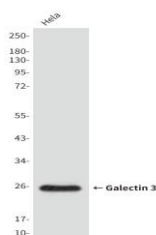
### Storage&Stability:

Store at 4 °C short term. Aliquot and store at -20 °C long term. Avoid freeze-thaw cycles.

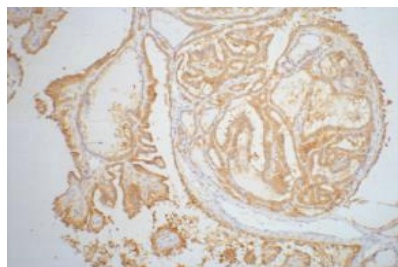
### Isotype:

IgG1

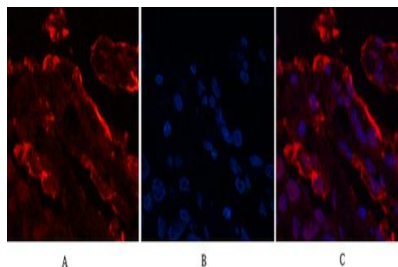
### DATA:



Immunofluorescence analysis of Galectin 3 in Human lungcancer tissue using Galectin 3 antibody, and DAPI.



Western blot analysis of Galectin 3 in HeLa lysates using Galectin 3 antibody



Immunohistochemistry analysis of paraffin-embedded Human thyroid tissue using Galectin 3 antibody. High-pressure and temperature Sodium Citrate pH 6.0 was used for antigen retrieval.

Western blot analysis of Galectin 3 in Jurkat, CHO-K1, 3T3 lysates using Galectin 3 antibody.

### Note:

For research use only, not for use in diagnostic procedure.

### Bioworld Technology, Inc.

Add: 1660 South Highway 100, Suite 500 St. Louis Park, MN 55416, USA.

Email: [info@bioworld.com](mailto:info@bioworld.com)

Tel: 6123263284

Fax: 6122933841

### Bioworld technology, co. Ltd.

Add: No 9, weidi road Qixia District Nanjing, 210046, P. R. China.

Email: [info@biogot.com](mailto:info@biogot.com)

Tel: 0086-025-68037686

Fax: 0086-025-68035151