

NSE (4C7) monoclonal antibody

Catalog: MB3180

Host: Mouse

Reactivity: Human, Mouse, Rat

BackGround:

ENO2 an enzyme with 2-phospho-D-glycerate hydro-lyase activity. One of the three enolase isoenzymes found in mammals. This isoenzyme, a homodimer, is found in mature neurons and cells of neuronal origin. A switch from alpha enolase to gamma enolase occurs in neural tissue during development in rats and primates.

Product:

Liquid in PBS containing 50% glycerol, 0.5% BSA and 0.02% sodium azide, pH 7.3.

Molecular Weight:

Calculated MW: 47 kDa; Observed MW: 47 kDa

Swiss-Prot:

P09104

Purification&Purity:

Affinity Purified

Applications:

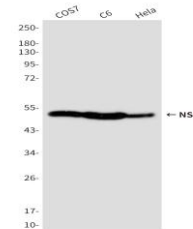
WB: 1/500-1/1000 IHC: 1/50-1/100 IF: 1/50-1/200

Storage&Stability:

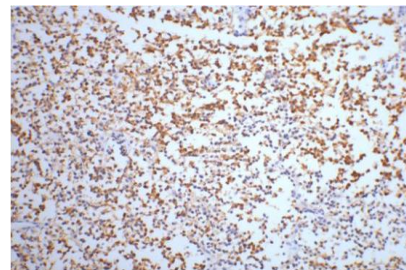
Store at 4 °C short term. Aliquot and store at -20 °C long term. Avoid freeze-thaw cycles.

Isotype:

IgG1

DATA:

Western blot analysis of Enolase2 in COS7, C6 and HeLa lysates using Enolase2 antibody.



Immunohistochemistry analysis of paraffin-embedded Human small cell carcinoma of lung tissue using NSE antibody. High-pressure and temperature Sodium Citrate pH 6.0 was used for antigen retrieval.

Western blot analysis of NSE in Enolase in CHO-K1, rat brain, C6, 3T3, HeLa lysates using Enolase antibody.

Immunocytochemistry analysis of NSE in HeLa using NSE antibody, and DAPI

Note:

For research use only, not for use in diagnostic procedure.

Bioworld Technology, Inc.

Add: 1660 South Highway 100, Suite 500 St. Louis Park, MN 55416, USA.

Email: info@bioworld.com

Tel: 6123263284

Fax: 6122933841

Bioworld technology, co. Ltd.

Add: No 9, weidi road Qixia District Nanjing, 210046, P. R. China.

Email: info@biogol.com

Tel: 0086-025-68037686

Fax: 0086-025-68035151