

ABCB5 (8D2) monoclonal antibody

Catalog: MB3183

Host: Mouse

Reactivity: Human

BackGround:

Drug efflux transporter present in a number of stem cells that acts as a regulator of cellular differentiation. Able to mediate efflux from cells of the rhodamine dye and of the therapeutic drug doxorubicin. Specifically present in limbal stem cells, where it plays a key role in corneal development and repair.

Product:

Liquid in PBS containing 50% glycerol, 0.5% BSA and 0.02% sodium azide, pH 7.3.

Molecular Weight:

Calculated MW: 139 kDa; Observed MW: 90 kDa

Swiss-Prot:

Q2M3G0

Purification&Purity:

Affinity Purified

Applications:

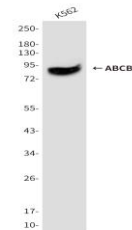
WB: 1/500-1/1000 IF: 1/50-1/200

Storage&Stability:

Store at 4 °C short term. Aliquot and store at -20 °C long term. Avoid freeze-thaw cycles.

Isotype:

IgG1

DATA:

Western blot analysis of ABCB5 in K562 lysates using ABCB5 antibody.

Western blot analysis of ABCB5 in HepG2, K562 lysates using ABCB5 antibody.

Immunocytochemistry analysis of ABCB5 in HeLa using ABCB5 antibody ,and DAPI

Note:

For research use only, not for use in diagnostic procedure.

Bioworld Technology, Inc.

Add: 1660 South Highway 100, Suite 500 St. Louis Park, MN 55416, USA.

Email: info@bioworld.com

Tel: 6123263284

Fax: 6122933841

Bioworld technology, co. Ltd.

Add: No 9, weidi road Qixia District Nanjing, 210046, P. R. China.

Email: info@biogot.com

Tel: 0086-025-68037686

Fax: 0086-025-68035151