

Cytokeratin 6 (1A5) monoclonal antibody

Catalog: MB3184

Host: Mouse

Reactivity: Human

BackGround:

There are at least six isoforms of human type II keratin-6 (K6). There are two types of cytoskeletal and microfibrillar keratin, I (acidic) and II (neutral to basic) (40-55 and 56-70 kDa, respectively).

Product:

Liquid in PBS containing 50% glycerol, 0.5% BSA and 0.02% sodium azide, pH 7.3.

Molecular Weight:

Calculated MW: 60 kDa; Observed MW: 56-60 kDa

Swiss-Prot:

P02538/P04259/P48668

Purification&Purity:

Affinity Purified

Applications:

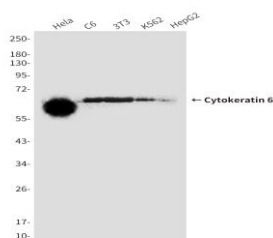
WB: 1/500-1/1000 IHC: 1/50-1/100 IF: 1/50-1/200

Storage&Stability:

Store at 4 °C short term. Aliquot and store at -20 °C long term. Avoid freeze-thaw cycles.

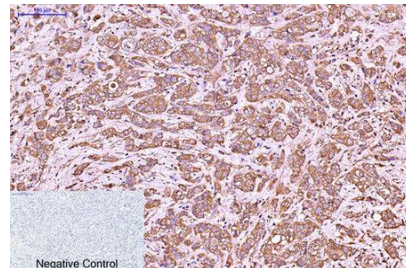
Isotype:

IgG1

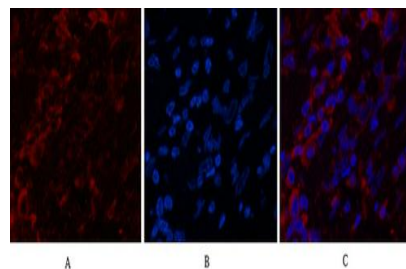
DATA:

Immunohistochemistry analysis of paraffin-embedded Human breast-cancer tissue using Cytokeratin 6 antibody. High-pressure and temper-

ature Sodium Citrate pH 6.0 was used for antigen retrieval. Negative control was used by secondary antibody only.



Immunofluorescence analysis of Cytokeratin 6 in Human breast cancer tissue using Cytokeratin 6 antibody, and DAPI.



Western blot analysis of Cytokeratin 6 in HeLa, C6, 3T3, K562, HepG2 lysates using Cytokeratin 6 antibody

Note:

For research use only, not for use in diagnostic procedure.

Bioworld Technology, Inc.

Add: 1660 South Highway 100, Suite 500 St. Louis Park, MN 55416, USA.

Email: info@bioworld.com

Tel: 6123263284

Fax: 6122933841

Bioworld technology, co. Ltd.

Add: No 9, weidi road Qixia District Nanjing, 210046, P. R. China.

Email: info@biogot.com

Tel: 0086-025-68037686

Fax: 0086-025-68035151