

CD15 (8C10) monoclonal antibody

Catalog: MB3193

Host: Mouse

Reactivity: Human

BackGround:

The product of this gene transfers fucose to N-acetylglucosamine polysaccharides to generate fucosylated carbohydrate structures. It catalyzes the synthesis of the non-sialylated antigen, Lewis x (CD15).

Product:

Liquid in PBS containing 50% glycerol, 0.5% BSA and 0.02% sodium azide, pH 7.3.

Molecular Weight:

-

Swiss-Prot:

P22083

Purification&Purity:

Affinity Purified

Applications:

IHC: 1/50-1/100 IF: 1/50-1/200

Storage&Stability:

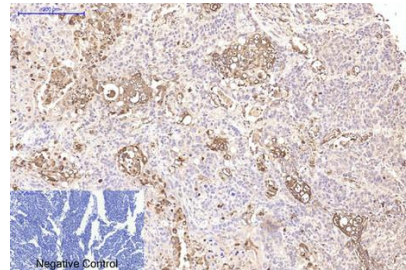
Store at 4 °C short term. Aliquot and store at -20 °C long term. Avoid freeze-thaw cycles.

Isotype:

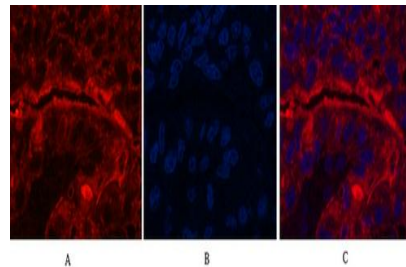
IgG1

DATA:

Immunohistochemistry analysis of paraffin-embedded Human lung cancer tissue using CD15 antibody. High-pressure and temperature Sodium Citrate pH 6.0 was used for antigen retrieval. Negative control was used by secondary antibody only.



Immunofluorescence analysis of CD15 in Human livercancer tissue using CD15 antibody, and DAPI.



Immunohistochemistry analysis of paraffin-embedded rat Brain Tissue using CD 15 antibody. High-pressure and temperature Sodium Citrate pH 6.0 was used for antigen retrieval.

Immunohistochemistry analysis of paraffin-embedded Human stomach using CD15 antibody. High-pressure and temperature Tris-EDTA pH 8.0 was used for antigen retrieval.

Note:

For research use only, not for use in diagnostic procedure.

Bioworld Technology, Inc.

Add: 1660 South Highway 100, Suite 500 St. Louis Park, MN 55416, USA.

Email: info@bioworld.com

Tel: 6123263284

Fax: 6122933841

Bioworld technology, co. Ltd.

Add: No 9, weidi road Qixia District Nanjing, 210046, P. R. China.

Email: info@biogot.com

Tel: 0086-025-68037686

Fax: 0086-025-68035151