

**beta I Tubulin (8E6) monoclonal antibody**

Catalog: MB3200

Host: Mouse

Reactivity: Zebrafish

**BackGround:**

Tubulin is the major constituent of microtubules. It binds two moles of GTP, one at an exchangeable site on the beta chain and one at a non-exchangeable site on the alpha chain (By similarity).

**Product:**

Liquid in PBS containing 50% glycerol, 0.5% BSA and 0.02% sodium azide, pH 7.3.

**Molecular Weight:**

Calculated MW: 50 kDa; Observed MW: 50 kDa

**Swiss-Prot:**

Q9H4B7

**Purification&Purity:**

Affinity Purified

**Applications:**

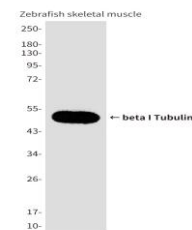
WB: 1/500-1/1000

**Storage&Stability:**

Store at 4 °C short term. Aliquot and store at -20 °C long term. Avoid freeze-thaw cycles.

**Isotype:**

IgG1

**DATA:**

Western blot analysis of beta I Tubulin in Zebrafish skeletal muscle lysates using beta I Tubulin antibody.

**Note:**

For research use only, not for use in diagnostic procedure.

**Bioworld Technology, Inc.**

Add: 1660 South Highway 100, Suite 500 St. Louis Park, MN 55416, USA.

Email: [info@bioworld.com](mailto:info@bioworld.com)

Tel: 6123263284

Fax: 6122933841

**Bioworld technology, co. Ltd.**

Add: No 9, weidi road Qixia District Nanjing, 210046, P. R. China.

Email: [info@biogot.com](mailto:info@biogot.com)

Tel: 0086-025-68037686

Fax: 0086-025-68035151