

eIF4A1 (6D7) monoclonal antibody

Catalog: MB3204

Host: Mouse

Reactivity: Human, Mouse, Rat

BackGround:

ATP-dependent RNA helicase which is a subunit of the eIF4F complex involved in cap recognition and is required for mRNA binding to ribosome.

Product:

Liquid in PBS containing 50% glycerol, 0.5% BSA and 0.02% sodium azide, pH 7.3.

Molecular Weight:

Calculated MW: 46 kDa; Observed MW: 46 kDa

Swiss-Prot:

P60842

Purification&Purity:

Affinity Purified

Applications:

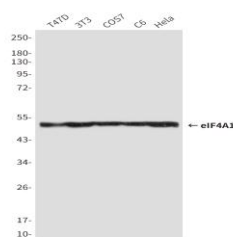
WB: 1/500-1/1000 IHC: 1/50-1/100 IF: 1/50-1/200

Storage&Stability:

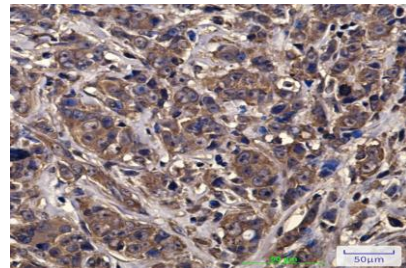
Store at 4 °C short term. Aliquot and store at -20 °C long term. Avoid freeze-thaw cycles.

Isotype:

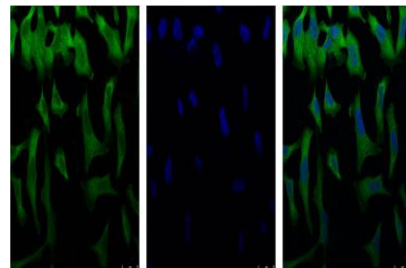
IgG1

DATA:

Western blot analysis of eIF4A1 in T47D, 3T3, COS7, C6 and HeLa lysates using eIF4A1 antibody.



Immunofluorescence analysis of eIF4A1 in HeLa using eIF4A1 antibody, and DAPI



Western blot analysis of eIF4A1 in CHO-K1, rat brain, C6, 3T3, HeLa lysates using eIF4A1 antibody.

Immunohistochemistry analysis of paraffin-embedded Human breast cancer tissue using eIF4A1 antibody. High-pressure and temperature Sodium Citrate pH 6.0 was used for antigen retrieval.

Note:

For research use only, not for use in diagnostic procedure.

Bioworld Technology, Inc.

Add: 1660 South Highway 100, Suite 500 St. Louis Park, MN 55416, USA.

Email: info@bioworld.com

Tel: 6123263284

Fax: 6122933841

Bioworld technology, co. Ltd.

Add: No 9, weidi road Qixia District Nanjing, 210046, P. R. China.

Email: info@biogot.com

Tel: 0086-025-68037686

Fax: 0086-025-68035151