

Cytochrome C (7C10) monoclonal antibody

Catalog: MB3222

Host: Mouse

Reactivity: Human, Mouse, Rat, Chicken

BackGround:

CYCS Electron carrier protein. The oxidized form of the cytochrome c heme group can accept an electron from the heme group of the cytochrome c1 subunit of cytochrome reductase. Cytochrome c then transfers this electron to the cytochrome oxidase complex, the final protein carrier in the mitochondrial electron-transport chain.

Product:

Liquid in PBS containing 50% glycerol, 0.5% BSA and 0.02% sodium azide, pH 7.3.

Molecular Weight:

Calculated MW: 12 kDa; Observed MW: 12 kDa

Swiss-Prot:

P99999

Purification&Purity:

Affinity Purified

Applications:

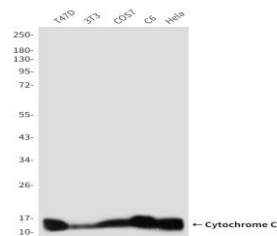
WB: 1/500-1/1000 IHC: 1/50-1/100 IF: 1/50-1/200

Storage&Stability:

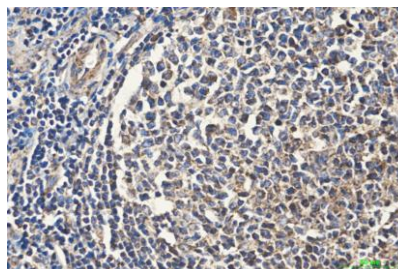
Store at 4 °C short term. Aliquot and store at -20 °C long term. Avoid freeze-thaw cycles.

Isotype:

IgG1

DATA:

Western blot analysis of Cytochrome c in T47D, 3T3, COS7, C6 and HeLa lysates using Cytochrome c antibody.



Western blot analysis of Cytochrome C in HeLa, T47D, mouse brain, K562, rat brain lysates using Cytochrome C antibody.

Immunocytochemistry analysis of Cytochrome C in HeLa using Cytochrome C antibody, and DAPI

Immunohistochemistry analysis of paraffin-embedded human tonsil tissue using Cytochrome C antibody. High-pressure and temperature Sodium Citrate pH 6.0 was used for antigen retrieval.

Note:

For research use only, not for use in diagnostic procedure.

Bioworld Technology, Inc.

Add: 1660 South Highway 100, Suite 500 St. Louis Park, MN 55416, USA.

Email: info@bioworld.com

Tel: 6123263284

Fax: 6122933841

Bioworld technology, co. Ltd.

Add: No 9, weidi road Qixia District Nanjing, 210046, P. R. China.

Email: info@biogot.com

Tel: 0086-025-68037686

Fax: 0086-025-68035151