

**beta I Tubulin (1H10) monoclonal antibody**

Catalog: MB3224

Host: Mouse

Reactivity: Human,Rat,Mouse

**BackGround:**

Tubulin is the major constituent of microtubules. It binds two moles of GTP, one at an exchangeable site on the beta chain and one at a non-exchangeable site on the alpha chain (By similarity).

**Product:**

Liquid in PBS containing 50% glycerol, 0.5% BSA and 0.02% sodium azide, pH 7.3.

**Molecular Weight:**

Calculated MW: 50 kDa; Observed MW: 50 kDa

**Swiss-Prot:**

Q9H4B7

**Purification&Purity:**

Affinity Purified

**Applications:**

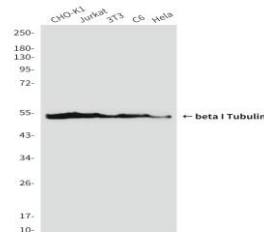
WB: 1/500-1/1000 IHC: 1/50-1/100 IF: 1/50-1/200

**Storage&Stability:**

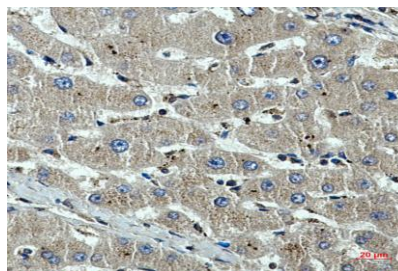
Store at 4 °C short term. Aliquot and store at -20 °C long term. Avoid freeze-thaw cycles.

**Isotype:**

IgG1

**DATA:**

Immunohistochemistry analysis of paraffin-embedded beta I Tubulin in Human liver cancer using beta I Tubulin antibody. High-pressure and temperature Sodium Citrate pH 6.0 was used for antigen retrieval.



Western blot analysis of beta I Tubulin in CHO-K1, Jurkat, 3T3, C6 and HeLa lysates using beta I Tubulin antibody

Western blot analysis of beta I Tubulin in HeLa, mouse Brain Tissue, rat Brain Tissue lysates using beta I Tubulin antibody

Western blot analysis of beta I Tubulin in A549, K562, THP-1, rat Brain, HeLa lysates using beta I Tubulin antibody.

**Note:**

For research use only, not for use in diagnostic procedure.

**Bioworld Technology, Inc.**

Add: 1660 South Highway 100, Suite 500 St. Louis Park, MN 55416, USA.

Email: [info@bioworld.com](mailto:info@bioworld.com)

Tel: 6123263284

Fax: 6122933841

**Bioworld technology, co. Ltd.**

Add: No 9, weidi road Qixia District Nanjing, 210046, P. R. China.

Email: [info@biogot.com](mailto:info@biogot.com)

Tel: 0086-025-68037686

Fax: 0086-025-68035151